

2017

AMAZING ALBANY

amazingalbany.com.au



amazingalbany

WESTERN AUSTRALIA

ESCAPE TO: AMAZING ALBANY

Situated on the south coast of Western Australia, Albany is less than an hour away by air from WA's capital city Perth and a mere 4.5 hours by road.

Widely regarded as one of the most beautiful and diverse coastlines in the world, Albany boasts beaches which are routinely named among the best in Australia.

Witness one of the most fearsome and formidable rock formations on the south coast – The Gap – just minutes from town in the Torndirrup National Park.

Learn about our history as a whaling town at Albany's Historic Whaling Station and see the gentle giants up close on a whale tour in our magnificent King George Sound.







Albany is steeped in incredible history, learn of the traditional home of the Minang Noongar Aboriginal people. Discover majestic historic buildings in the city centre and explore the birthplace of the Anzac story.

With world-class wine, food, fishing, surfing, swimming, hiking, diving, mountain biking, camping and a myriad of other activities all on offer within minutes of the city, there is something for everyone in Amazing Albany, from gourmet wine-lovers to intrepid 4WD explorers and everyone in between.

Amazing Albany is the jewel of the Great Southern. We hope you enjoy your stay in one of Australia's most sought after tourism destinations.





PHOTO CREDITS

Elements Margaret River, Skyprints, Western Angler, Travis Deane, City of Albany, Andrew Halsall, Krysta Guille, Merv Levitzke, Marwick Brothers Media, Daisy Van Ross, Renae O'Donnell, Ian Redmond, Cape Howe Cottages, Maitraya Luxury Private Retreat, Albany's Historic Whaling Station, Alison Paine, Limeburners (Great Southern Distilling Company).

	HEAD SOUTH	2
	TEN AMAZING THINGS TO DO	3
	ADVENTURE ALBANY	4
	NATURAL ALBANY	6
	TASTE ALBANY	8
	ANZAC ALBANY	10
	HISTORICAL ALBANY	16
	ARTS ALBANY	18
	MAPS	20
	BEACHES	24
	THINGS TO SEE & DO	26
	FOOD AND WINE	32
	ACCOMMODATION	35
	RETAIL	41
	BREMER BAY	42

CONTENTS

→ amazingalbany.com.au

-  amazingalbany.com.au
-  facebook.com/amazingalbany
-  twitter.com/amazingalbany
-  instagram.com/amazingalbany

—
To discover upcoming events head to amazingalbany.com.au/events

ALBANY VISITOR CENTRE

INFORMATION

+61 8 9841 9290
info@amazingalbany.com.au

BOOKINGS

+61 8 9841 9377
stay@amazingalbany.com.au

OPEN 7 DAYS

(except Christmas Day)

Located at the bottom of York Street.
Old Railway Station, 55 Proudlove Pde.
Albany, Western Australia 6330



amazingalbany

WESTERN AUSTRALIA



ESCAPE TO ALBANY ANY WAY YOU CAN...

DRIVE —

Albany is just a 4.5 hour, 416km drive south of Perth, straight down Albany Highway. Driving through some of the State's most beautiful countrysides, you'll pass forests, working farms, vineyards and, in late winter and early spring, spectacular yellow fields of flowering canola.

What are you waiting for? Throw a few bags in the car, wind down the window and turn up the music. The breeze will blow away the city cobwebs in no time.

COACH —

TransWA operates daily coach passenger services to Albany from Perth. The destination point is the Albany Visitor Centre, Proudlove Parade, Albany. A coach drive from Perth to Albany takes about six hours, via Williams, Gnowangerup or Bunbury.

Bookings:
(within Australia) 1300 662 205
(international) +61 8 9326 2600
www.transwa.wa.gov.au

FLY —

The fastest way to travel to Albany from Perth is to fly. Regional Express have flights daily to and from the newly upgraded Albany Airport and flight schedules are available at www.rex.com.au. Private charter aircraft are also available for hire. Albany Airport is located 11 kilometres north of Albany on Albany Highway and car hire is available at the terminal.



TEN AMAZING THINGS TO DO

- 1) Witness the annual migration of whales in Amazing Albany from June to October. As the whales frolic in our sheltered bays to calve and mate, sometimes binoculars aren't necessary – they can be seen from prime viewing spots around Albany's coastline! Dolphins and seals are also regularly spotted in Albany's sheltered waters.
- 2) Albany is the home of Faye Howe, the Lighthouse Girl on Breaksea Island who was the last point of human contact many of the Anzacs had with Australia before departing to Gallipoli. Visit the home of the Lighthouse Girl in Albany, with helicopter scenic flights available to Breaksea Island Nature Reserve.
- 3) Visit the National Anzac Centre! The National Anzac Centre honours the Anzacs of the First World War. Set within Albany Heritage Park, the Centre offers visitors a deeply personal connection with the Anzac story. Walk with the Anzacs and experience the Great War through their personal stories. Entry fees apply.
- 4) For a mind-blowing display of vibrant, diverse flora, take a wildflower tour! Spot kangaroo paws, starbush, pea plants, sedges, heaths and an impressive range of orchids.
- 5) Visit the newly opened Gap and Natural Bridge attractions at Torndirrup National Park. Witness the fearsome waves atop a spectacular new lookout platform, and enjoy the dramatic views of the beautiful Albany coastal environment.
- 6) Taste our award-winning wines, spirits, locally made beer, farm fresh marron, olive and sandalwood products. Try the freshly shucked Albany oysters, boutique goat's cheese, local bushfoods, and taste W.A.'s first single malt whisky.
- 7) Stake a patch of white sand at Middleton Beach. Swim in the shelter of Ellen Cove, or walk towards Emu Point until the surf beckons. Embark on the Middleton Beach boardwalk, a must see for all visitors to our city. Visit Little Beach, recently named one of the best beaches in Australia.
- 8) Visit Albany for one its major events or festivals. Many are unique to Albany, such as the Albany Car Classic, the Albany Urban Downhill, Vancouver Street Festival, the Great Southern Festival, and the Taste Great Southern Festival. Visit amazingalbany.com.au/events to find out when and where.
- 9) Albany Heritage Park features a wealth of activities for all ages and interests. Picnic in the Memorial Gardens, take one of the many walking trails, or visit the Convoy Walk and Lookout on Mount Adelaide.
- 10) Explore Albany on your bike or hike with the new Ten Great Rides and Ten Great Walks guides. Available at amazingalbany.com.au/adventure or from the Albany Visitor Centre, there is a ride to suit all abilities and age groups! Take off on an adventure solo, or with friends and family.



 **SOUTHERN MTB**

Albany is home to Australia's first urban downhill.

In September, the streets of Albany transform into the ultimate mountain bike battleground in the Albany Urban Downhill. Downhill racers burst onto the streets of Albany, riding a purpose-built course in the ultimate spectator event.

ADVENTURE SEEKERS look no further. Extreme sports and escapades are all part of the journey in Albany, and not just for the uber-fit. Take rockclimbing, some Porongurup Range climbs can be explored by the inexperienced, while the spirited climber may venture further to the Stirling Range National Park. A hike for everyone, the 3km return Castle Rock Granite Skywalk offers panoramic views of the Porongurup region. The Bluff Knoll climb at the Stirling Ranges is a must-do. The Bald Head walk in Torndirrup National Park, a 15km return hike, offers stunning coastal views just 20 minutes from town.

HEAD OFF THE BEATEN TRACK with a 4WD drive out to West Cape Howe National Park. Stand on the

southernmost point of WA and peek over the dolerite cliffs if you dare! Self drive the 4WD track, or embark on a 4WD tour with a knowledgeable guide.

GET ON YOUR BIKE! Bike paths take you to some of Albany's most breathtaking sites including beaches, harbours, and into native bushland. Take in the harbour and wildflower hotspots via winding paths and tracks and past spectacular coastal scenery. When you've reached the end of your ride, refresh with a swim and a picnic.

Embark on an off-road adventure and hop on your mountain bike through the Munda Biddi Trail, stretching from Mundaring to Albany. Or hike the Bibbulmun Track, which stretches from Perth to Albany.



JOURNEY WITH NATURALISTE CHARTERS to the Bremer Canyon – a stunningly beautiful, remote habitat abundant with marine wildlife: whaler sharks, giant squid, sperm whales, masses of sea birds and the largest known group of killer whales in the Southern Hemisphere. The killer whales visit Bremer Bay from January to April each year.

WINDSURFERS are in paradise in Albany, with the protected waters of Princess Royal Harbour and adjacent coastline offering some of Western Australia's best wind and kite-surfing hotspots.

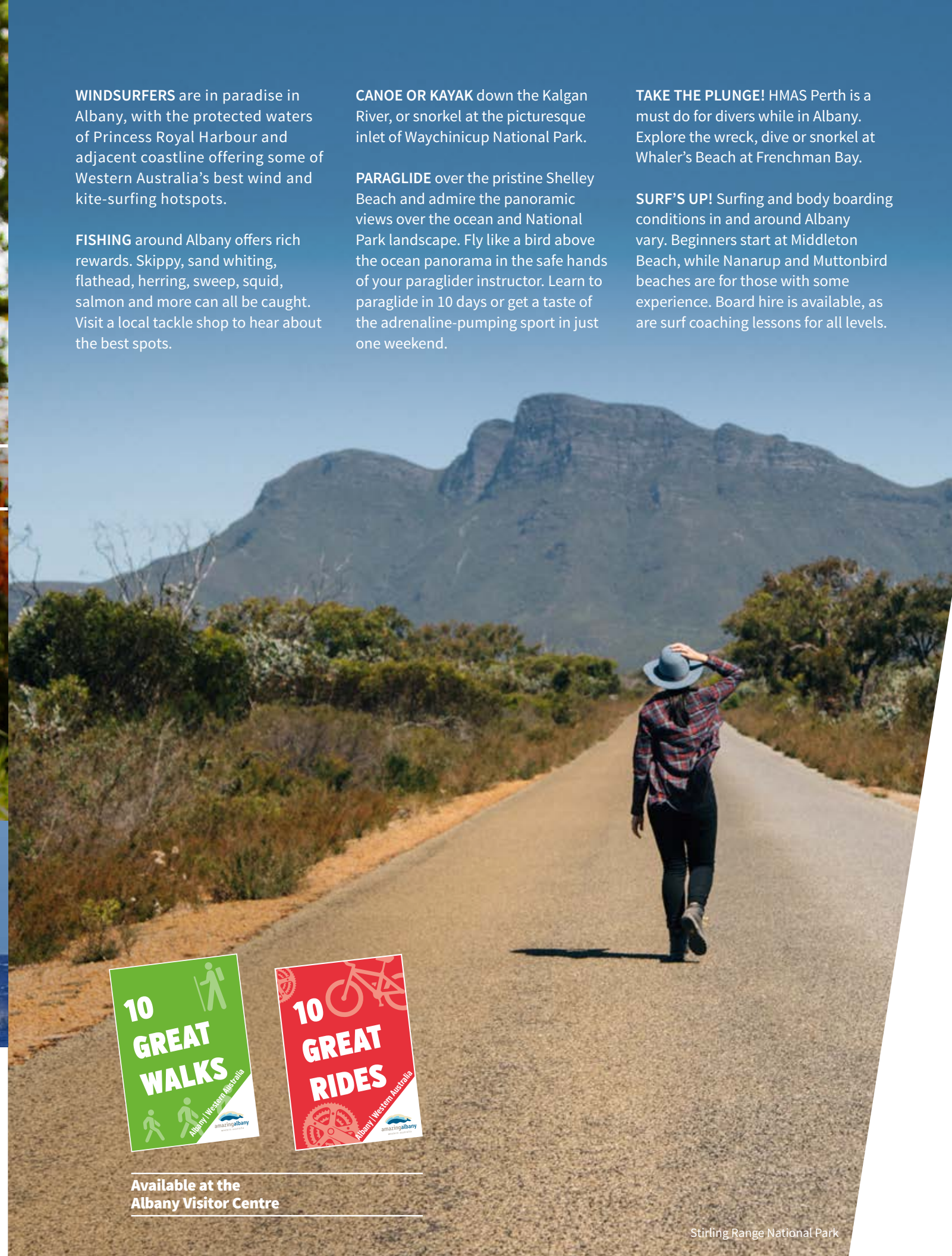
FISHING around Albany offers rich rewards. Skippy, sand whiting, flathead, herring, sweep, squid, salmon and more can all be caught. Visit a local tackle shop to hear about the best spots.

CANOE OR KAYAK down the Kalgan River, or snorkel at the picturesque inlet of Waychinicup National Park.

PARAGLIDE over the pristine Shelley Beach and admire the panoramic views over the ocean and National Park landscape. Fly like a bird above the ocean panorama in the safe hands of your paraglider instructor. Learn to paraglide in 10 days or get a taste of the adrenaline-pumping sport in just one weekend.

TAKE THE PLUNGE! HMAS Perth is a must do for divers while in Albany. Explore the wreck, dive or snorkel at Whaler's Beach at Frenchman Bay.

SURF'S UP! Surfing and body boarding conditions in and around Albany vary. Beginners start at Middleton Beach, while Nanarup and Muttonbird beaches are for those with some experience. Board hire is available, as are surf coaching lessons for all levels.



Available at the
Albany Visitor Centre

Stirling Range National Park



The Gap - Torndirrup National Park
Photo: Skyprints Albany

SPLASH

Western Australia has one of the longest whale-watching seasons in the world! The annual migration of humpback, southern right whales and the rare blue whale brings these marine creatures to Albany waters. From June to October, observe these gentle giants.

Albany is surrounded by a plethora of national parks and nature reserves. Whichever direction you take, you are spoilt for choice. Torndirrup National Park features massive granite outcrops, sheer cliffs and the famous Gap and Natural Bridge rock formations.

MUST DO ●●●●●●●●●●
→ Stand on the southernmost point of Western Australia at the West Cape Howe National Park.

→ Visit Two Peoples Bay, home to one of WA's best beaches, Little Beach.

→ Waychincup National Park: Picnic, camp, swim, canoe and fish your way through a weekend at one of Albany's prettiest inlets.

→ Gull Rock National Park and Mt Martin Botanical Reserve: Move through forest, wetlands and coastal heath as you encounter diverse land forms and sites of natural beauty.

→ The Porongurup National Park is home to the Granite Skywalk. Suspended from Castle Rock, the Skywalk offers panoramic views of the Porongurup landscape.

→ Visit Bluff Knoll in the Stirling Range National Park, the highest peak in Southern Western Australia and one of the few places in WA that experiences snow. The 6km return trip requires a reasonable level of fitness but is well worth the effort.

→ Visit Walpole Wilderness Discovery Centre including the impressive Tree Top Walk, Valley of the Giants.

→ Kalgan River hearth site where Noongar people used to set up camp for its excellent food source.

FLYING HIGH Bird watchers will find the best of Amazing Albany when they frequent these bird watching sites:

→ Torndirrup National Park for Honeyeaters and the Grey Currawong.

→ The Gap for seabirds, Albatross species and the Australasian Gannet.

→ Ellen Cove for Southern Emu-Wren, Red-Eared Firetail and White-Breasted Robin.

→ King River Reserve for Western Rosella, Splendid and Red-Winged Fairy Wren.

→ Lower King Bridge for Grey Plover and Osprey.

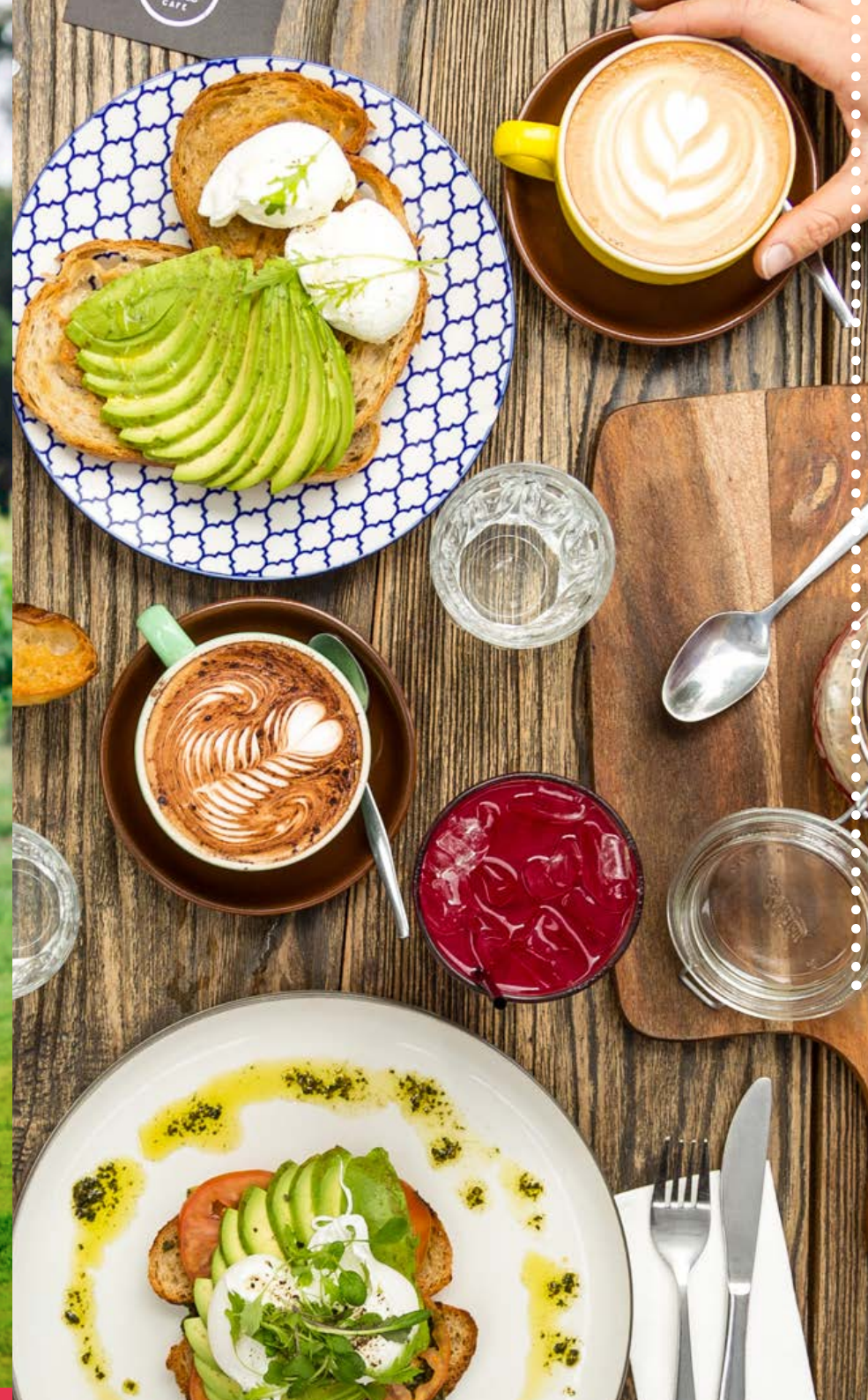
WILDFLOWERS For a mind-blowing display of vibrant, diverse flora, take a wildflower tour and discover the best of Amazing Albany. Spot kangaroo paws, starbush, pea plants, sedges, heaths and an impressive range of orchids including the beautiful Queen of Sheba sun orchid.

Stirling Range National Park and the Porongurup Range offer the most accessible approaches to wildflower viewing. Spot bandicoot, wallabies and kangaroos in the Porongurup Range while you walk beneath giant karri amid spectacular granite formations.

Dramatic peaks and rugged coastlines are yours for the taking in Amazing Albany.



Discover the authentic taste of Amazing Albany and you'll forget there's any other culinary experience worth having.



- Steaming hot French pastries at the Sunday Boatshed Markets
- Fresh Albany produce at the Albany Farmers Markets on Collie Street, each Saturday morning
- Take home Albany rock oysters washed down with local bubbly
- Caffeine, cake and company at one of Albany's charming cafes
- Delicious barbecued marron straight from the dam
- An organic seasonal platter and glass of Riesling among the vines
- A pie and craft-beer pint in front of a crackling fire at Western Australia's oldest pub.
- Whether it's 'roo kebabs or locally made dukkah, experience Australia's native bushfoods here in Albany
- Lunch by the beach at a café or restaurant along Middleton Beach or Emu Point, or pack a picnic lunch with local gourmet produce



TASTE GREAT SOUTHERN [MARCH]

Plan your visit to Albany around Taste Great Southern in March. Don't miss the four-week celebration of the region's best tasting offerings. Featuring vineyard events, culinary conversations and a long list of seductive food and wine-related events, there is something for wine connoisseurs, foodies, families and everyone in between.

www.greatsoutherntastewa.com

FOOD There's a reason Albany's gourmet providores, organic food producers, farmers' markets and dining outlets are stacking up all the food awards' silverware. Produce so fresh you can count the minutes since it was harvested, devotion to sustainable agricultural methods, commitment to time-honoured cooking techniques passed down through generations and a strictly seasonal approach to dining room menus. The list goes on and so does Albany's food and wine scene, brimming with produce so fresh it begs to be devoured, now.

You won't be able to resist stacking boxes full to the brim as you trawl the local providores, cellar doors and gourmet outlets around Albany.

LOCAL MARKETS
Saturday: Farmers Market
Sunday: Albany Boatshed Markets

WINE Producing internationally recognised wines of excellence comes naturally in Amazing Albany. So identify your skipper and plan your foray around Albany's celebrated cellar doors.

Albany is one of five sub-regions of the Great Southern wine region, the largest wine region in Australia. The Great Southern wine region spans Albany, Denmark, Porongurups, Mount Barker and Frankland River, with wineries nestled between stunning views and landscapes. Producing 37% of wine grapes in Western Australia, the region boasts cellar doors galore. Albany and the Great Southern is home to internationally acclaimed wineries with the region's winemakers held in high regard.



Thirty thousand fighting men, representing
are under way for the great
person describing the departure of the first

**BIRTHPLACE OF THE
ANZAC LEGEND**

A visit to the National Anzac Centre is a must do. Open 9am every day except Christmas Day, last entry at 4pm. Located Mount Adelaide, Albany Heritage Park.

In late 1914 over 41,000 Australians and New Zealanders left Albany, bound for the Great War. This is their story.

These simple yet evocative words inform the content of the National Anzac Centre, a state-of-the-art interpretive museum overlooking King George Sound. Walk with the ANZACs and experience the Great War through their personal stories. Follow them from Albany in 1914, to the Middle East, to

Gallipoli and across the Western Front, and, for too few, home to Australia and New Zealand. The National Anzac Centre uses multimedia and interactive technology to create a deeply personal connection with the past, as well as pay tribute to those who served.

On 1st November 1914, the first convoy of Australian and New Zealand troops departed for the First World War from King George Sound, Albany. For many, Albany was their last sight of Australian soil.

Albany and the National Anzac Centre are destined to be the natural starting place of pilgrimage for many generations to come. A place of beginning, as it was for the first Anzacs.

Visit Albany to Remember.

Set within the heritage listed Princess Royal Fortress, the National Anzac Centre offers visitors a deeply personal connection with the Anzac experience. Within the National Anzac Centre, the key phases and events of the First World War are told through the stories of the ANZACs themselves. With unique content developed by the Western Australian Museum and Australian War Memorial, visitors assume the identity of one of 32 characters, and follow their personal experience of the Great War: from recruitment, through training and embarkation, ship-board life on the convoys, on to the conflicts at Gallipoli, the Middle East and the Western Front, and post-war... for those who returned. These personal stories unfold through interactive multimedia displays, poignant artefacts, rare images and film, and audio commentary.

As the story of conflicts within the National Anzac Centre draws to a close, the names of the 41,265 service men and women who left Albany in the first and second convoys are revealed: scrolling beneath a Pool of Reflections. The experience concludes with the discovery of each character's fate and a Tribute Wall where visitors may document their own feelings and messages to the ANZACs. These appear within the National Anzac Centre, and are then shared with the world via the internet. The seamless melding of sophisticated yet unobtrusive technology with real-world artefacts, coupled with a strong dedication to telling the personal stories of the first ANZACs has resulted in one of Australia's most important – and genuinely moving – heritage experiences.



National Anzac Centre



An artwork titled Longing, Memory, Sight by Arif Satar and Audrey Fernandes-Satar marks the beginning of the Convoy Walk. Inspired by a fragment of a letter a soldier sent to his loved one, the sculpture contains inscribed text obtained from original letters and postcards sent by Australian soldiers who departed in 1914.

The walk contains 21 markers containing information about the ships in the First and Second Convoys, including the names and images of the troopships and escorts, and where they embarked troops.

The Convoy Walk leads to the Convoy Lookout, with a view over King George Sound where troops gathered on ships before departing for the First World War.



FIRST DAWN SERVICE

At dawn on 25 April 1930, Padre White led parishioners to the summit of Mount Clarence to observe the laying of a commemorative wreath to the fallen: founding Albany's dawn service tradition. The site is widely regarded as the location of Australia's first dawn service.

View from Mt Clarence over King George Sound

LOOK OUT OVER THE 1914 DEPARTURE POINT



ALBANY HERITAGE PARK

Ataturk Memorial

Overlooking the Channel also bearing his name, the scenic boardwalk that leads from Albany to Middleton Beach is home to a life-sized statue of Mustafa Kemal Atatürk, the President of Turkey from 1923 – 1938 and the leader of the Turkish forces at Gallipoli.

Avenue of Honour

Large gum trees line the Avenue of Honour on Apex Drive – the road to the top of Mount Clarence. At the base of each tree, plaques bear the names of soldiers lost at war.

National Anzac Centre

The National Anzac Centre honours the ANZACs of the First World War. Set within the heritage listed Princess Royal Fortress, the Centre offers visitors a deeply personal connection with the Anzac legend. Walk with the Anzacs and experience the Great War through their personal stories. From Albany in 1914, to Gallipoli and Palestine; across the Western Front. Fees apply.

Princess Royal Fortress Museum

Commissioned in 1893, the Princess Royal Fortress represents one of the first cooperative acts between the pre-federation states of Australia and is the oldest surviving military site in Western Australia.

Convoy Walk and Lookout

An interpretive walk and lookout atop Mount Adelaide overlooking King George Sound, where the First and Second Convoys anchored before departure. The walk contains 21 markers containing information about the ships in the First and Second Convoys.

Desert Mounted Corps Memorial

After the First World War, soldiers from Australia and New Zealand contributed one day's pay to commission a monument to the fallen on the banks of Port Said in Egypt. The Desert Mounted Corps Memorial replicates this memorial and stands proudly on the summit of Mount Clarence, site of the Albany's Dawn Service.

Padre White Lookout

At dawn on the 25 April 1930, Padre White led parishioners from St John's

Church to the summit of Mount Clarence, the very site where so many gathered to watch the convoys depart in 1914. Today the Padre White Lookout is the region's most visited lookout and serves as an enduring place of reflection.

PLACES OF INTEREST

Ataturk Channel

In exchange for the Turkish Government's agreement to name the beach at Gallipoli where the Australian and New Zealand troops landed "Anzac Cove", the channel leading into Princess Royal Harbour was officially named "Ataturk Channel".

Anzac Peace Park

A number of Anzac stories have been integrated into seats located throughout the park, providing rest points and time to reflect and investigate the stories.

WA Museum

The museum provides exhibitions and programs as well as information on the region's natural and social history.

Albany Memorial Park Cemetery

A site of profound historical significance, ANZACs are buried at the Albany Memorial Park cemetery. Names of ANZACs are also commemorated on family headstones.

Lone Pine Grove

The Lone Pine Grove provides a major focus for the theme of peace within Anzac Peace Park. It expresses a direct and living connection between Gallipoli and Albany and the idea of peace across time, place and people.

Pier of Remembrance

The Pier provides a site for respite and reflection of those lost in the war and enables visitors to enact in a physical and symbolic way the process of 'leaving', much as was done by the troops departing for war in 1914. The names of the ships comprising the first and second convoys are inscribed along the pier.

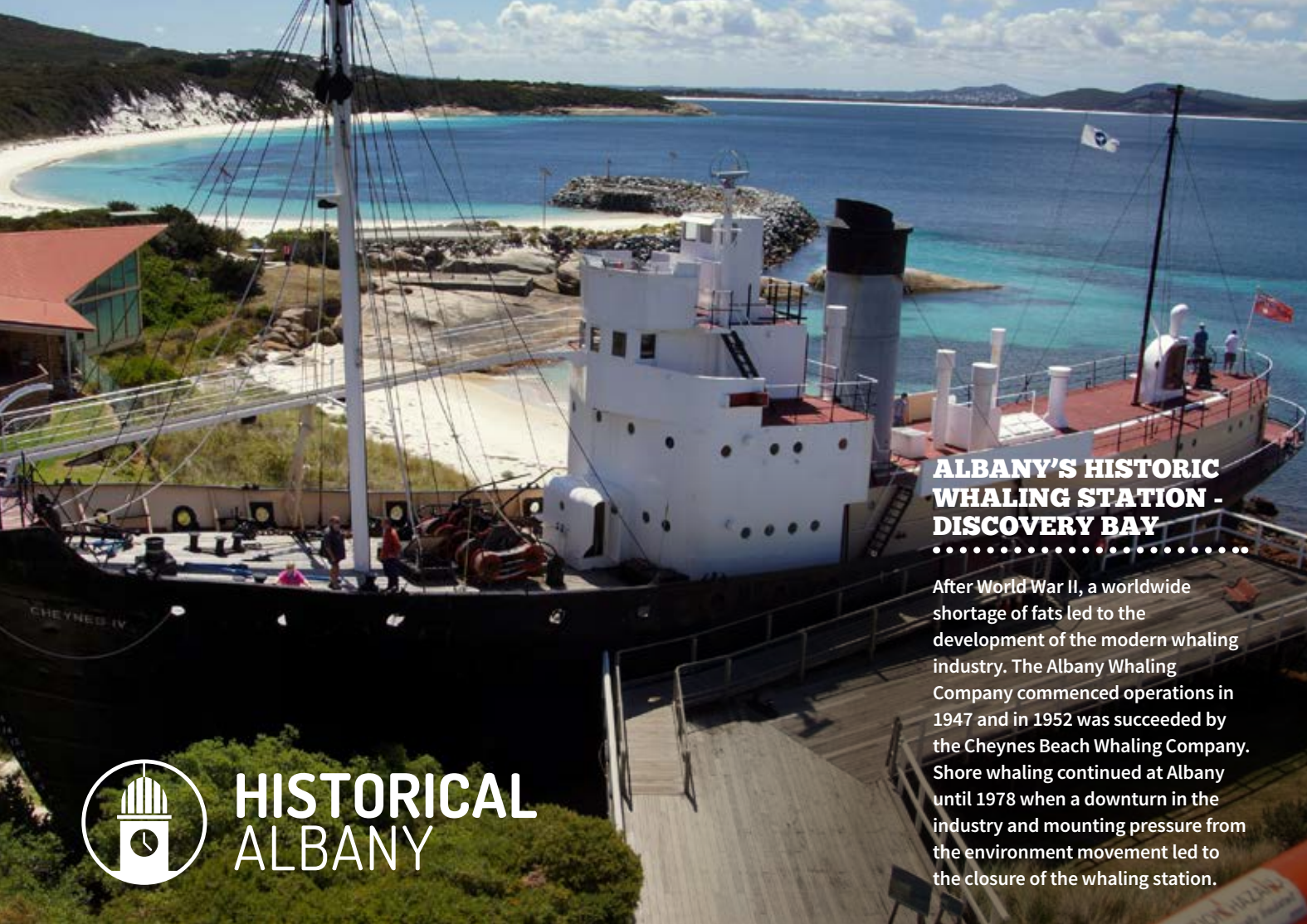
St John's Anglican Church

Padre White's home church. Walk through Western Australia's first consecrated church and find out more about Padre White and the beginning of the Dawn Service tradition.



Princess Royal Fortress

Create your own Anzac Albany pilgrimage trail with the Anzac Albany Map & Guide, available from the Albany Visitor Centre or the Forts Store at Mount Adelaide.



ALBANY'S HISTORIC WHALING STATION - DISCOVERY BAY

After World War II, a worldwide shortage of fats led to the development of the modern whaling industry. The Albany Whaling Company commenced operations in 1947 and in 1952 was succeeded by the Cheynes Beach Whaling Company. Shore whaling continued at Albany until 1978 when a downturn in the industry and mounting pressure from the environment movement led to the closure of the whaling station.



Brig Amity

Kaya Kaya choorrabinyi Minang boodja. Welcome to Minang Country. May the spirit of 'our ancient people' of long ago guide your journey. 'Follow in their footsteps.'

NOONGAR HISTORY

Albany is the traditional home of the Minang Noongar Aboriginal people, who have lived in the area since time immemorial. When the settlement at King George Sound was established in 1826, the Minang peoples quickly established a cooperative relationship with the settlers which led to a period of relatively harmonious coexistence.

The Europeans recognised the people's ownership to the surrounding lands and waterways, shared their houses and took part in their ceremonies. The Minang peoples were at first suspicious but eventually welcomed the settlers as another tribe and allowed them to settle. They acted as guides, instructors and informants on all things to do with their territory.

While you're here, visit the ancient stone fish traps built 7,500 years ago by Minang people that caught huge numbers of fish as the tide in the Kalgan River rose and fell.

MUST DO

- Explore the Albany Heritage Park trails on foot or by mountain bike
- Discover the historic barracks and gun emplacements at Princess Royal Fortress
- Take in the views from the Apex, Convoy and Padre White Lookouts
- Commemorate the servicemen and women from all theatres of war at the Desert Mounted Corps Memorial on Mount Clarence
- Visit the Princess Royal Fortress, the oldest surviving military site in Western Australia
- Visit the National Anzac Centre or shop for a unique gift or souvenir
- Dine at the impressive Garrison Restaurant with panoramic views of Princess Royal Harbour
- Take the family for a picnic to the Albany Heritage Park gardens and soak in the natural beauty.

ALBANY HERITAGE PARK

Extraordinary from Summit to Sea

Albany Heritage Park is a 260 hectare parkland reserve set in the heart of Albany. The premier tourist attraction in the South West, it surrounds the summits of Mt Adelaide – Irrerup and Mt Clarence – Corndarup and stretches from the Port of Albany to the shores of Middleton Beach.

The Park is the ultimate heritage destination, offering a unique blend of natural, cultural and historical attractions: from the wonder of wildflowers, to Aboriginal and European cultural sites – including pre-federation military installations at Princess Royal Fortress and the new National Anzac Centre.

Explore the park by car, bike or foot to discover the wonders of the Great Southern, including the region's highest lookouts offering breathtaking views to the Stirling Ranges, Princess Royal Harbour and King George Sound.

Whether you have a few hours or a full day, Albany Heritage Park has a range of activities for all ages and fitness levels.

PLACES OF INTEREST

WA Museum, Albany

The museum provides exhibitions and programs as well as information on the region's natural and social history.

Brig Amity

Take a guided tour of the 1970s built replica of the sailing ship that brought the first European settlers to Western Australia. Group and guided tours available.

Albany Convict Gaol

Fully restored, displays include the Great Hall, warders' quarters and cells. Try a night tour that includes Hangman's Yard, ghostly tales, indigenous cell art, a death mask and the Black Hole.

Patrick Taylor Cottage

An 11-room wattle and daub home, said to be the oldest surviving dwelling in Western Australia.

Discovery Bay

Incorporating the Historic Whaling Station, Australian Wildlife and Botanic Garden, Discovery Bay features living murals of wildflower colour, native animal enclosures, 12km of boardwalks through paths of protected wetlands and an interactive learning experience.

Maximising its location, Discovery Bay is a showcase of amazing regional bio-diversity, yet still remains true to the original whaling display.

Old Farm, Strawberry Hill

Visit the first farm established in Western Australia. View the historic homestead and stroll the beautiful gardens.

Fish Traps

Discover the ancient stone fish traps built 7,500 years ago by Minang people at Albany's Oyster Harbour.





PUBLIC2016 Street Art Festival
Photo: FORM



PUBLIC2016 Street Art Festival
Photo: FORM

ALBANY ENTERTAINMENT CENTRE



The magnificent 618-seat proscenium arch Theatre has hosted productions from companies such as Bell Shakespeare, the Sydney Dance Company and WA's own Black Swan State Theatre Company.

VANCOUVER ARTS CENTRE



Built in 1887 and designed by architect George Temple Poole, the sandstone brick building originally served as the Albany Cottage Hospital until 1962. Today, Vancouver Arts Centre is the region's hub for arts experiences.

OPENING TIMES
MONDAY TO FRIDAY 9-4PM
SATURDAY 10-3PM

Think star-quality musos, artisanal stores to die for, and international acts...

Found on the historic Vancouver Street in Albany, the **Vancouver Arts Centre** is the region's key focal point for arts experiences. With three galleries and numerous workshop spaces it offers an inclusive and diverse annual program of arts activities and experiences for anyone aged 2 to 102.

The centre coordinates and hosts touring and local exhibitions, artists in residence, interactive and engaging ArtSpaces, adult and children's workshops, community projects and a range of diverse events on its own and in partnership with others. The centre is home to a number of active arts and craft groups and artists and is well used by the local community, whilst at the same time, warmly welcoming all visitors through its doors.

Perth International Arts Festival (PIAF) brings Great Southern Festival to our shores every February. Enjoy a myriad exhibitions, workshops, performances, indie flicks and heritage site tours.

The Vancouver Street Festival is held each year in Albany's City Centre. Taking place in early May, there will be street performances, live music, gourmet food, artisan markets, exhibitions, workshops, craft activities and plenty of vintage flair.

- The Biennial Great Southern Art Award is a non-selected exhibition featuring works from artists across the Great Southern. The exhibition opens Easter Weekend and will be on display at the Town Hall until early June.
- The Southern Art + Craft Trail boasts more than 60 exhibitions and studios in September and October each year. Plan your visit around the Trail and soak up the authentic experience of the region with workshops, exhibitions, demonstrations, awards and opportunities.
- Held at the Historic Town Hall, the City of Albany Art Prize is a national, acquisitive painting prize with a \$25,000 award sponsored by the Jack Family Charitable Trust as well as a range of non-acquisitive awards. 2017 is the 10th anniversary of the Prize. The exhibition features thirty selected finalists. and opens in early September.
- Listen as you forage: the weekend markets showcase the best of Albany's musos.
- Check out the Southern Edge Art's program – the circus kids are something else!
- Book your stay around the Albany Entertainment Centre's program of global artists.



MAP 1
Mill Brook Nature Reserve

In order to protect high value conservation areas from the spread of dieback, some bushwalking trails and vehicle tracks in and near **Waychinicup National Park** and within **Two Peoples Bay Nature Reserve** have been closed to visitor use.

Legend

Sealed road	Albany Visitor Centre	Dump point
Unsealed road	Airport	Fuel
Track	Baby changing facilities	Golf
Railway	Barbecue (wood)	Information
Bibbulmun Track	Barbecue (gas)	Paddling
Munda Biddi Trail	Bibbulmun Hut	Picnic area
Walk trail	Boat ramp	Public toilet
National park	Bore hole	Scenic vista
Nature reserve	Bushwalking	Scuba diving
	Camping	Swimming
	Camping area	Telephone
	Camping/caravan park	Tourist information
	Caravan park	Walking track
	No caravans	Winery
	Cemetery/Crematorium	Wreck
	Cycle track	4WD track

Disclaimer
Whilst every care has been taken compiling this publication the Albany Visitor Centre and Promaco Geographics accepts no responsibility for any errors or omissions therein. The information set out was correct at the time of printing and can be subject to change without notice.

Warning
Water features shown do not guarantee water and if there, the quality of the water cannot be assured. Outdoor activities can be hazardous. Suitable safety precautions should be taken at all times. The information contained here does not guarantee your safety.

Designed & Printed by Promaco Geographics December 2012

P Many four-wheel drive (4WD) tracks in **West Cape Howe National Park** cross steep hills and have stretches of deep sand. Please take note of these simple tips that will save the tracks from being churned up and eroded further:
Reduce tyre pressure for soft sand driving, remember to inflate when leaving the park. Engage 4WD **before** you reach the sand and keep to existing tracks.
For your safety
Don't speed along narrow, one lane tracks and sound your horn when approaching corners and ridges.

Take care
Keep your personal safety in mind at all times. Caution is required in any natural environment with potentially hazardous terrain and the national parks are no exception.
Stand back from rocky headlands and cliff edges. Many areas within the parks have steep, rocky slopes and much of the rock is loose and crumbly.
Choose fishing or swimming sites with great care. The Southern Ocean is unpredictable, making rock fishing and swimming especially dangerous. Huge waves and swells can suddenly occur even on calm days. Rocks become slippery when wet. Rip tides are common along the coastline.
 Please heed warnings shown on signs that display this symbol.

THE GAP & NATURAL BRIDGE- Two natural features carved from ancient granite by the forces of nature. The Gap features a 25 metre sheer drop to the ocean.

JIMMY NEWHILLS HARBOUR- A small protected harbour named after a fisherman driven into the inlet by a sudden squall.

SALMON HOLES- Named after salmon looking for calm waters close to the beach

The most southerly point of Western Australia

The park has some of the most spectacular natural scenery on the coast.

Popular fishing and spear fishing areas.
Picnic area with fishing from beach and rocks.

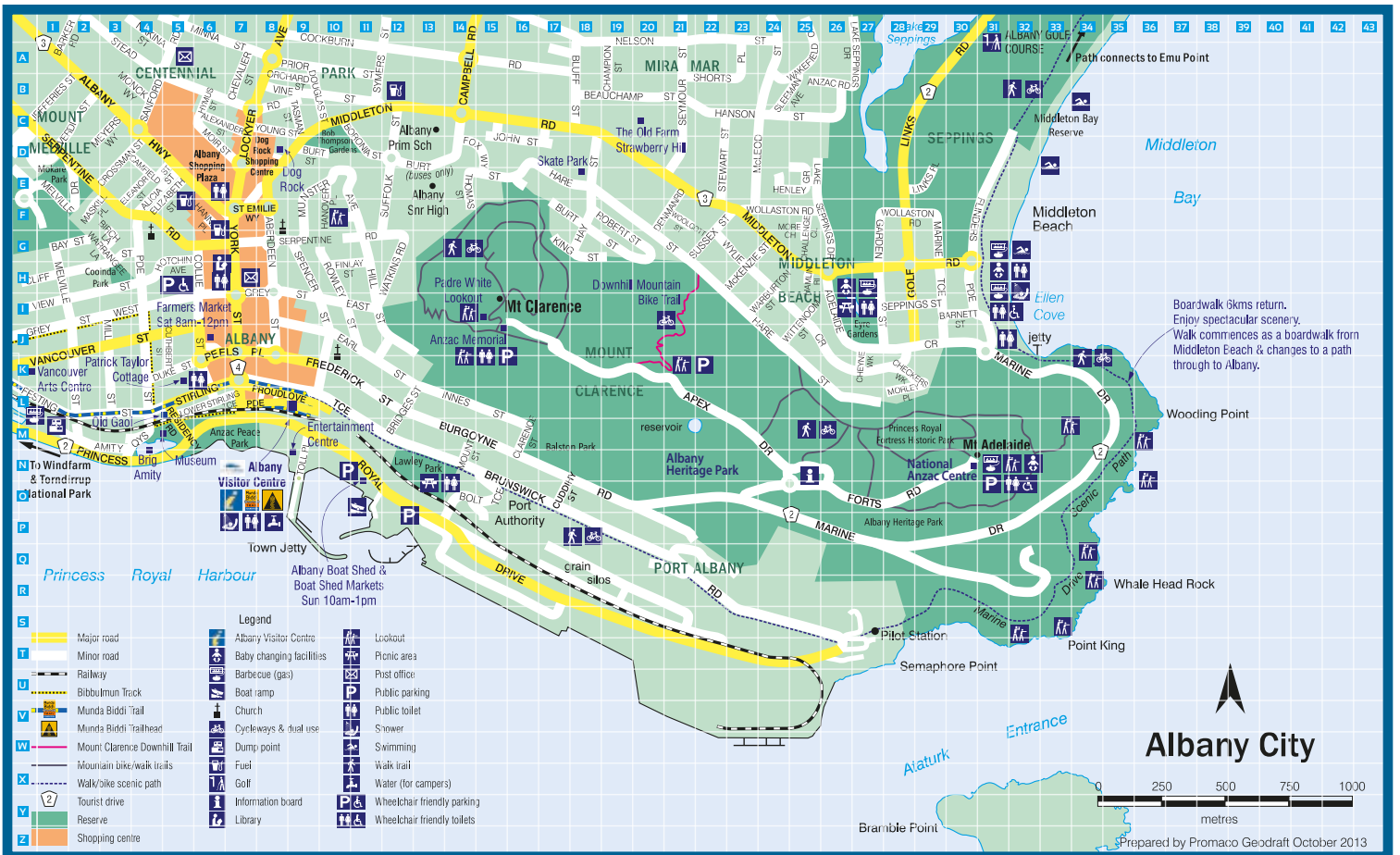


Albany & Surrounds

MAP 2



MAP 3





Mutton Bird Beach



Salmon Fishing

BEACHES

BEACH LEISURE Laze your day away and **stake out a patch of sand** at one of Albany's **pristine beaches**.

Middleton Beach → Popular with families, with gentle waves, a jetty for fishing, protected swimming area and cafes a stone's throw away.

Emu Point Beach → Sheltered beach, perfect for kayaking and paddling with a café close by.

Little Beach → Regularly voted one of Western Australia's best beaches. Features pristine sand and calm waters set within Two People's Bay Nature Reserve.

Misery Beach → Secluded and sheltered spot with gentle waves. Views over King George Sound. A local secret!

Shelley Beach → Watch the hang gliders and paragliders above you, with beautiful views of the West Cape Howe National Park.

Whalers Cove → Protected waters make this spot suitable for family swimming. Clear and calm waters make this spot good for snorkelling.

SURF OUR TURF There's a surf spot for everyone in Amazing Albany, with conditions to suit all experience levels. Windsurfers are in paradise in Albany, with the protected waters of Princess Royal Harbour and adjacent coastline offering some of the State's best wind and kite surfing hotspots.

Mutton Bird & Nanarup → Beach break, left and right. Easy access. Best winds: North, or North-West. Suitable for all surfers.

Salmon Holes → Sand and reef break, left and right. Best winds: West or North-West. For experienced surfers.

Blow Holes → Beach break, left and right. Best on small swell. Best winds: North-East or North. For experienced surfers.

Sand Patch → Beach break, left and right. Needs northern winds. Good smaller swell. For experienced surfers.

Dingos → Heavy shore break with a wedge, left and right. North-west winds are best, and at least a 2m swell. 4WD access only.

FISHING is an Albany pastime, and most fishing spots are accessible by 2WD vehicles, followed by a short walk. Western Angler editor Scott Coghlan shares Albany's best fishing spots:

City Marina → Fish from the rocks, landing or jetty for herring, bream, squid and the occasional pink snapper.

Emu Point Channel → Shore fishing for herring, King George whiting, skippy, small salmon and the occasional squid.

Sand Patch → Long walk, but can reward anglers with good fishing for herring, skippy, a few tailor, and salmon.

Shelley Beach → Salmon during their annual run, and herring. Bonito from the beach.

Cheyne Beach → Great fishing from the beach for herring and skippy, along with big numbers of salmon during the annual run.

Bornholm Beach → Tricky 4WD track in and out, but offers good beach fishing for herring, salmon, tailor, as well as sharks.

King George Sound → Great boat fishing for King George whiting, squid, skippy, sand whiting, herring and flathead. Salmon when in season, southern blue fin tuna and bonito.

Two Peoples Bay → Boat and shore fishing for herring, King George whiting and squid. Boat fishing for samson fish, queen snapper, Breaksea cod and dhufish.

Taylor Inlet/Nanarup → Fishing in the inlet for black bream, juvenile salmon and occasional King George whiting. Catch herring, salmon, skippy and tailor from the beach.

Salmon Holes → Salmon, during their annual season, and herring from the beach. **CAUTION: DO NOT FISH FROM ROCKS. LIVES HAVE BEEN LOST.**

Kalgan River → Great shore and boat fishing for black bream and small mulloway, along with herring. Juvenile salmon and tailor in the lower reaches, and blue swimmer crabs. Landing under bridge can also fish well.

Oyster Harbour → Boat fishing for herring, King George whiting and also black bream on the flats. Same species from the boat harbour jetties.



ALBANY ENTERTAINMENT CENTRE

SHOWS FOOD CONFERENCES

FOODWINECOFFEE VIEW

2 Toll Place, Albany
Ph 08 9844 5000
info.aec@ptt.wa.gov.au
www.albanyentertainment.com.au

For reservations Ph 08 9844 5040

CERTIFICATE OF EXCELLENCE
tripadvisor

MAP 3: N-9



ALBANY & GREAT SOUTHERN WILDERNESS TOURS

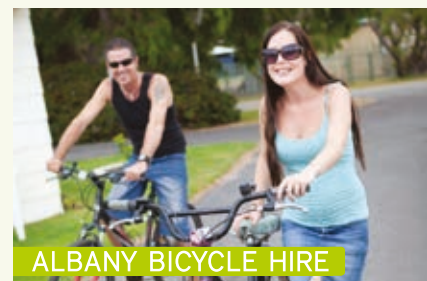
Out Of Sight Tours:
1 day 4WD West Cape Howe Tour
Experience most southerly point of WA,
Ploughman lunch.

Albany & Great Southern Wilderness Tours:
2 day luxury personalised nature-based
touring, Gourmet lunch, premium wine.
Private Charter available.

Tel: 0413 669589 or 0409 036443
showmethewine@overabarrel.com.au
www.albanywildernesstours.com.au



MAP 3: N-9



ALBANY BICYCLE HIRE

Free drop off and pick up service to accommodation in the Albany city area. Helmet, locks and map included. Adult and Child sizes. Baby seats available.

Middleton Beach, Albany
Tel: (08) 9842 2468
downunder@albanyis.com.au
www.albanybicyclehire.com.au

MAP 3: H-31



ALBANY WHALE TOURS

Aquatic adventures with AWT Albany Whale and Wilderness Tours.
Winner: Certificate of Excellence 2014, 2015 & 2016 – Tripadvisor.com
Stunning scenery: welcoming, knowledgeable crew.
"SAIL-A-WAY" – WHALE WATCHING TOURS – JUNE TO EARLY OCTOBER, Free Devonshire teas included.
Twilight/Sunset cruises – November to April. Group bookings and parties.
WAVERIDER – Breaksea Island Tours, Sheltered water cruises.

Bookings Essential:
Mob: 0422 441 484
sailaway@westnet.com.au
www.albanywhaletours.com.au



MAP 3: N-10



ALBANY HISTORY COLLECTION

Unlock the past, and be richly rewarded in the archives of the Albany History Collection. A visit to one of the foremost regional archives in WA's oldest European settlement will be a memorable experience with the surprising discoveries made!

221 York Street, Albany
Mon - Fri 9am – 5pm Sat 10 – 12
Tel: (08) 9841 9327
history@albany.wa.gov.au



MAP 3: H-6



BUSY BLUE BUS

We are Albany's premier coach tour company. We visit the 'must see' attractions of Albany, Denmark & The Porongorups, including exclusive 'behind the scenes' experiences, and expert local commentary. Our tours showcase the best of the Great Southern's local produce and wines. We'll take you there in comfortable, clean coaches. Complimentary transfers available on request.

Tel: (08) 9842 2133
info@busybluebus.com.au
www.busybluebus.com.au



DENMARK THRILLS ADVENTURE PARK

Come along and enjoy a fantastic day in nature at Denmark Thrills Adventure Park. We offer 52 acres of mother nature's finest, set amongst the Giant Karri Trees and overlooking Mount Lindesay. You can enjoy; bubble soccer, slacklining, bocce, zorbing, climbing and abseiling, paving maze, giant tree swings and our 60m flying fox, all for only \$10 per person for an all-day pass. We also offer the world's longest Hydro-Zorbing track, the only one of its kind in Australia. At 600m long it is a thrilling experience that will make you laugh like crazy, bookings are essential for Hydro-Zorbing.

380 Mt Shadforth Road, Denmark
0434 070 434
denmarkthrills@gmail.com



MAP 2: O-22



DENMARK ANIMAL FARM & PENTLAND ALPACA STUD

Animals to cuddle & feed. Alpacas, koalas, kangaroos, emus, camel, foxes, ferrets, sheep, goats & more! Koalas fed 10am, bottle feeding 3pm. Gallery with alpaca knitwear & "Stunned Emu Designs" art by Wendy Binks. Open daily 10-4.

2019 Scotsdale Rd (cnr McLeod Rd)
Denmark
Tel: +618 98409262
pentlandfarm@bigpond.com
www.pentlandalpaca.com.au



MAP 2: O-11

Historic Whaling Station • Australian Wildlife • Wildflower Garden

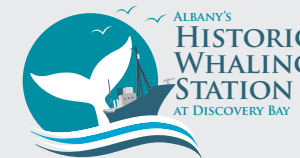


Experience the best of the Great Southern at Australia's last Whaling Station.

Guided tours hourly from 10am - 3pm | Open 7 days 9am - 5pm (Closed 25 Dec)



81 Whaling Station Road, Albany Western Australia 6330
P. (08) 9844 4021 | E. reception@discoverybay.com.au | discoverybay.com.au



MAP 1: O-22

Take the time

to experience the three naturally beautiful sites in the Walpole Wilderness Discovery Centre



Swarbrick Art Loop

Mt Frankland Wilderness Lookout

Valley of the Giants Tree Top Walk

We Walked the Walk

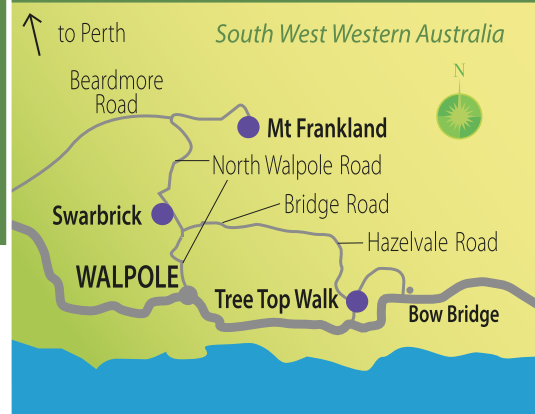


Visit the three sites in one day at a leisurely pace and discover unique beauty the whole family will enjoy.

WALPOLE WILDERNESS DISCOVERY CENTRE for the whole family

W: www.parks.dpaw.wa.gov.au
 f: www.facebook.com/treetopwalk
 e: ttw@dpaw.wa.gov.au
 t: (08) 9840 8263

MAP 2: R-4



DOWN UNDER MOTORCYCLE TOURS

Experience the thrill of a Harley Davidson motorcycle or the comfort of the Trike!

Simply the best way to see Albany's unique scenery.

Middleton Beach, Albany
 Tel: (08) 9842 2468
downunder@albanya.com.au
www.harleytours.com.au



MAP 3: H-31



GREAT SOUTHERN COMFORT TOURS

Explore the GREAT SOUTHERN REGION in a maximum 6 person Tour designed by your choice of History, Spectacular Landscapes, Coastlines, taste sensations of local and world renowned wines and produce.

Tel: 0439 962 430
greatsoutherncomforttours@gmail.com
www.greatsoutherncomforttours.com.au



MAP 3: H-31



ITRAILS DOWN UNDER

iTrails! Want an exciting holiday adventure? iTrails are like treasure hunts and car rallies all in one. Solve picture clues, cryptic clues, and/or use GPS; go from checkpoint to checkpoint; and discover some of Albany's amazing and unique hidden treasures. GREAT family fun!!

Tel: 0407 931 920
www.itrailandownunder.com.au
explore@itrailandownunder.com.au



MAP 3: H-31



KALGAN QUEEN RIVER BOAT CRUISE

"An award winning performance" Billy Tea, Coffee & Captain Kalgan's famous HOT DAMPER you can see and learn more about Albany, it's history and wildlife in 4 hours than some people do in a life time! Sheltered water. Departs 9am Daily.

Emu Point Boat Pens, Albany
 Tel: (08) 9844 3166
captain@albanyaaustralia.com
www.albanyaaustralia.com



MAP 1: J-21



LIMEBURNERS ALBANY

Australia's 2016 Champion Distiller sits on the harbour's edge in Albany. Here, you'll find Australia's 2015 and 2016 Champion Whiskies, as well as other award-winning, craft spirits and liqueurs. Open 7 Days.

252 Frenchman Bay Road, Albany 6330
 Tel: (08) 9842 5363
info@distillery.com.au
www.distillery.com.au



MAP 1: L-17



MUSEUM OF THE GREAT SOUTHERN

EXPLORE, LEARN AND DISCOVER Explore Albany's ancient Menang past, discover its unique landscapes, rich biodiversity and fascinating history. Enjoy engaging hands-on activities in our family friendly Discovery Centre.

Entry by donation
 Residency Road, Albany
 Tel: (08) 9841 4844
museum.wa.gov.au



MAP 3: M-5



NATURALISTE CHARTERS

Bremer Canyon Killer Whale Expeditions
 Join Naturaliste Charters from January to April where the ocean becomes alive with an abundance of marine life. Daily Expeditions to this remarkable location off the coast of Bremer Bay.

Tel: (08) 9750 5500
info@whales-australia.com.au
www.whales-australia.com.au



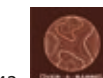
MAP 3: N-9



OVER-A-BARREL WINE & CULINARY TOURS

PERSONALISED, LUXURY, WINE & CULINARY TOUR. Experience 3 wine regions, exclusive wine tastings. Sumptuous 3 course lunch with premium wine. Cheese, chocolate, toffee, condiment & cider tastings. Private Charter available.

Phil & Caroline Cox
 Tel: 0413 669589 or 0409 036443
showmethewine@overabarrel.com.au
www.albanywildernesstours.com.au



MAP 3: N-9



SUPLIME

Experience Albany's amazing waterways on SUPs - under the guidance & safety of our friendly, professional Instructors.
 Group bookings, tours, lessons & hire for the whole family.

6 Middleton Rd, Middleton Beach,
 Tel: 0426 287370 / 0475 090404
suplimewa@gmail.com
www.suplimewa.com.au



MAP 3: J-31



SKYHOOK HELICOPTERS

Experience a breathtaking helicopter flight over Albany and the beautiful Great Southern coastline. Our flights take in some incredible scenery such as King George Sound, Breaksea and Michaelmas Island, Middleton Beach, Emu Point and Oyster Harbour, Princes Royal Harbour and Goode Beach to name a few. Enjoy a landing on Breaksea Island to view the old lighthouse or take a wine and dine flight to a winery or brewery for lunch. All flights include full commentary in airconditioned comfort. Over 20 years of experience.

Discovery Bay - 81 Whaling Station Rd, Frenchman Bay.
Tel: (08) 9844 4021
enquiries@skyhookhelicopters.com.au
www.skyhookhelicopters.com.au



MAP 1: 0-22



SOUTHERN OCEAN SAILING

Experience amazing Albany aboard our 40' yacht 'Panacea'. Relax whilst enjoying magnificent scenery and wildlife, or take the helm and experience sailing one of the finest yacht designs in the world. Morning / afternoon tea supplied. Like to skipper your own boat? We also conduct Recreational Skipper's Ticket assessments for Yachting WA.

Waterfront Marina, Toll Place, Albany
Tel: 0428 429 911
info@soswa.com.au
soswa.com.au



MAP 3: 0-11



THE OLD MARRON FARM

Set amongst some of Albany's best beaches and national parks and offering a variety of homemade dishes including local marron; a Bird & Animal Park; and Segway Adventure Tours.

304 Two People's Bay Road, Albany
Tel: (08) 9846 4239
sharon@albanyfarm.com.au
www.albanyfarm.com.au



MAP 1: H-26



Welcome to our new Transwa fleet

With over 40 services to and from Albany each week, your journey is about to get even more comfortable.



We're in the process of rolling out 23 new Road Coaches across our network, and Albany is one of the first towns to get to enjoy them. New features include USB ports, air conditioning, on-board entertainment and all coaches are fully accessible.

Don't forget, 50% concession is available to Seniors nationally, WA Pensioner and Health Care card holders, WA full-time Students and children aged under 16 years.

For bookings and enquiries:
1300 662 205 | transwa.wa.gov.au



Public Transport Authority **Bringing WA closer** **Transwa**

MAP 3: 0-11



Find Yourself IN THE PORONGURUPS

WWW.PORONGURUP.COM

MAP 2: J-26



THE SANDALWOOD FACTORY, MT ROMANCE

Indulge your senses in the showroom featuring Pure Australian Sandalwood, beauty and lifestyle products. Open: 9am – 5pm Daily
 Learn about sustainable sandalwood harvesting and oil distillation in the FREE educational tour.
 Try "The Gong" for an unforgettable hour of relaxation.
 Enjoy delicious tea, coffee and cakes in The Sandalwood Café. Open: 9am – 4pm Daily

2 Down Rd, Albany WA 6330
 Tel: (08) 9845 6888
 romance@mtromance.com.au
 www.mtromance.com.au



MAP 1: F-14



VANCOUVER ARTS CENTRE

Explore the original Albany Cottage Hospital with a self-guided heritage tour, view some of the City's art collection and enjoy a range of traditional and contemporary art exhibitions. Bring a picnic and enjoy the spectacular harbour views from our lawn.

For info on upcoming events email arts@albany.wa.gov.au or visit www.albany.wa.gov.au

Open Mon-Fri 9-4, Sat 10-3
 85 Vancouver Street, Albany
 Tel: (08) 9841 9260
 Instagram: @Vancouver_arts



MAP 3: K-1



BLACK DUCK GOURMET PANTRY

Specialising in local and Great Southern gourmet products. Gift hampers made to order, can be posted Australia wide. Beautiful handmade chocolates. Enjoy a coffee and gourmet cake while you browse.

34 Peels Place, Albany WA 6330
 Tel: (08) 9842 1433
 sales@blackduckpantry.com.au
 www.blackduckpantry.com.au



MAP 3: J-7



HOOKED ON MIDDLETON BEACH

Dine in and take away Fish & Chips. Hooked is all about relaxed, affordable dining and fantastically fresh food! Local fish, homemade salads and desserts, licensed with a range of beer, cider, pre-mixed spirits and local wine.
 OPEN 6 days a week (closed Tuesday)
 Lunch: 11.30am – 2pm
 Dinner: 4.30pm – 8.30pm

12/20 Adelaide Crescent, Middleton Beach
 Tel: (08) 9842 2422
 hookedonmiddletonbeach@gmail.com
 www.hookedonmiddletonbeach.com.au



MAP 3: J-27



GREAT SOUTHERN SEAFOODS

Great Southern Seafoods is a State of-the-art factory which is situated close to the town centre and boasts a modern fresh fish retail outlet and processing area. By owning their own boats, a constant supply of local, premium quality seafood is guaranteed at very competitive prices.

37 Hercules Cres, Albany WA
 Tel: (08) 9842 2551
 fish@greatsouthernseafoods.com.au
 www.greatsouthernseafoods.com.au



MAP 3: A-1



NANNYGUAT JUNCTION

Fresh Goat Cheese from our farm. Biodynamic/Organic Meats supplied. Oyster Harbour Markets Wed - 1-6pm Steiner Denmark Markets Fri 3-5pm Stirling Tce Markets Sat 8-1pm Boatshed Markets Sun 10-2pm

Lowlands, Albany
 Tel: 0429 115 165
 nannygoatjunction@gmail.com
 www.nannygoatjunction.com.au



MAP 1: M-1



THE WHITE STAR

Restaurant, Bar, Brewery and Music. Overlooking King George Sound we bring to you a modern twist within our historic building. Open seven days a week for Lunch and Dinner.

72 Stirling Terrace Albany,
 Tel: (08) 9841 1733
 info@whitestarhotel.com.au
 www.whitestarhotel.com.au



MAP 3: K-8



ALBANY FARMERS MARKET

Only Farmers from the Great Southern sell what they have grown or raised themselves. Find a huge choice and range of locally grown vegetables, fruits, farmed meats, seafood, dairy and more. Meet the farmer. Enjoy the vibrancy of the market community while shopping for all your fresh food needs.

Albany Farmers Markets – Collie Street
 Saturday 8am – 12noon
 Tel: (08) 9841 4312
 farmersmarketalban@bigpond.com
 www.albanyfarmersmarket.com.au

MAP 3: J-6



BAY MERCHANTS

Bay Merchants is an iconic café, store and wine merchant, patisserie, bakery and newsagent. A local gem, Bay Merchants offers breakfast and lunch, great coffee, service and atmosphere for everyone to experience and enjoy.

18B Adelaide Crescent,
 Middleton Beach
 Tel: (08) 9841 7821
 info@baymerchants.com.au
 www.baymerchants.com.au



MAP 3: J-29



OCEAN & PADDOCK

Ocean and Paddock Albany, the humble Aussie Fish and Chip shop re-imagined by two chefs as Albany's premier gourmet Fish and Chip Shop. Using only the freshest local fish and seasonal specialties like Lobster, Marron and Oysters. The menu also has a lot more than seafood with a daily changing menu that showcases the best local farm produce with our extensive Paddock to Plate options. Plus stunning desserts made by our in-house pastry chef as well as ice creams, milkshakes and locally roasted coffee. Ocean and Paddock, more than just a fish and chip shop.

116 Middleton Rd, Albany
 Tel: (08) 9842 6212
 www.oceanandpaddock.com.au
 www.facebook.com/oceanandpaddock



MAP 3: F-23



ORANJE TRACTOR WINE



Let us treat you like Royalty! Enjoy a Wine Flight – a selection of our superb organic wines paired with local cheese & other delicacies on Sundays (no reservation required). On Saturdays join us for the Royal Organic Orchard Tour and experience the same Oranje Tractor hospitality as the famous Royals received or for a Wine Masterclass (bookings essential at least 24 hours prior). Summer heralds Pizza Nights on Fridays, using fresh, local produce and our wood-fired oven (prior booking also required). See website for other great events.

198 Link Road, Marbelup
Tel: (08) 9842 5175
info@oranjetractor.com
www.oranjetractor.com



MAP 1: I-15



THREE ANCHORS

At Three Anchors we focus on delivering to you the best in local produce at the picturesque location of Middleton Beach. Open seven days for Breakfast, Lunch and Dinner.

2 Flinders Pde, Middleton Beach
Tel: (08) 9841 1600
info@threeanchors.com.au
www.threeanchors.com.au



MAP 3: J-31



VANCOUVER STREET CAFE

Vancouver Street Cafe is located in a quaint corner store a few doors down from the Vancouver Arts Centre. The cafe is open 7 days a week for breakfast and lunch and serves meals based on locally sourced seasonal produce, house baked cakes and coffee.

65 Vancouver St, Albany
Tel: (08) 9841 2475



MAP 3: K-1



WEST CAPE HOWE WINES

With the benefit of old vines and temperate growing conditions West Cape Howe consistently produces premium quality wines that people love to drink. Visit our Cellar Door open 7 days. Coffee available and Platters made to order.

14923 Muir Highway
Mount Barker WA 6324
Tel: (08) 9892 1444
info@wchowe.com.au
www.westcapehowewines.com.au



MAP 2: I-20



WINDRUSH WINES/CAFE

Delightful wines, tasty lunches, coffee & homemade cakes to enjoy in a stunning setting overlooking the vineyard and Mt Barker hills. Open Friday - Sunday & Public Holidays 10.00am - 4.00pm. Bookings encouraged.

Cnr St Werburgh's & Hay River Rds,
Mt Barker WA 6324
Tel: (08) 9851 1353 - 0400 894 353
contactus@windrushwines.com.au
www.windrushwines.com.au



MAP 2: K-20



WIGNALLS WINERY

Only 5 minutes drive from Albany's CBD, North on Chester Pass Road. Known for our outstanding service and reputation of wine ranging from \$10 to International awarded Ultra Premium Styles. Open 7 days a week from 11am to 4pm with extended hours over peak holiday periods. Voted the TOP 25 Cellar Doors in Australia 2005. Seasonally closed June-August.

Tel: (08) 9841 2848
info@wignallswines.com.au
www.wignallswines.com.au
www.vintageblues.com.au



MAP 1: H-19



ALBANY BAYSIDE OCEAN VILLAS

"Accommodation Guaranteed to Impress!"
Our Guests keep coming back! We know what people want and we provide it!
Our villas are clean, safe and of a high quality with attention to detail. We are also situated on a beautiful beach, with cycling, walking trails, cafes and a golf course within walking distance.
We are confident you will be very pleased with the cleanliness and the quality of our villas.
1-3 bedroom villas available. Prices from \$175 per night (Attractive discounts offered through the year)

Dillon Close, Albany
Tel: 1800 335 995 or 0400 216 971
accom@albanybaysideoceanvillas.com
www.albanybaysideoceanvillas.com

Albany Bayside Ocean Villas
Quality Accommodation in a Great Location

MAP 1: J-21



A SUNSHINE FARMSTAY

Escape to private & restful forest between Albany & Denmark. Large 3 bedroom house on working farm, perfect for families. Close to beautiful beach, Bibbulmun Track & Munda Biddi cycleway. Abundant bird & animal life.

524 Meanwood Road, Albany
Tel: (08) 9845 1480
sunshinefarmstays@bigpond.com
www.sunshinefarmstay.com

MAP 2: S-19



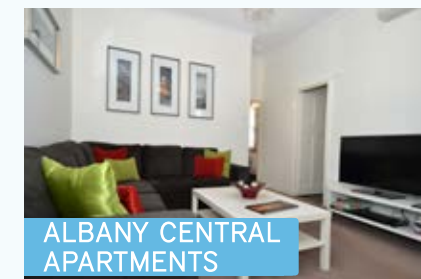
ACE MOTOR INN

Deluxe, Spa & Family Rooms available. Licensed restaurant and bar. Rooms have wireless internet & in-house movies. Room service for dinner. Located 2km from the City centre.

314 Albany Highway, Albany
Tel: +618 9841 2911
www.acemotorinn.com.au
reservations@acemotorinn.com.au



MAP 1: J-18



ALBANY CENTRAL APARTMENTS

Centrally located, boutique style 1 & 2 bedroom self-contained apartments featuring luxury furnishing throughout with a homely touch of comfort and convenience. Stroll to restaurants, cafes, shops and the Albany Entertainment Centre

41 Collie Street, Albany
Tel: 0427 740 659
info@albanycentralapartments.com.au
www.albanycentralapartments.com.au



MAP 3: J-5



ALBANY GARDENS HOLIDAY RESORT

Just 1km from the centre of Albany, on the south most coast of WA, our holiday park offers a variety of modern accommodation options, spacious grass sites for camping and large drive through powered and ensuite sites - all set in a quiet parkland setting. We have something for everyone!

Tel: 1800 888 617
Tel: (08) 9841 4616
info@albanygardens.com.au
www.albanygardens.com.au



MAP 1: K-18



ALBANY HARBOURSIDE APARTMENTS & HOUSES

Fully self catering 1, 2 and 3 bedroom apartments and houses. Centrally located, walk to restaurants, shopping, museums and harbour. Free wifi. Superb views. Excellent facilities, great locations.

8 Festing Street, Albany
Tel: (08) 9842 1769
info@albanyharbourside.com.au
www.albanyharbourside.com.au

MAP 3: L-2



ALBANY HOLIDAY PARK

Conveniently located on Albany Highway this secure park is your base for all attractions in the Albany area and surrounds. The park boasts easy access and grassy powered sites for caravans and camping, pet friendly caravan sites and room for the kids in the playground and open spaces. Modern self contained accommodation is available in a 3BR holiday house or 1BR and 2BR units with everything you need for a relaxed holiday. Other facilities include BBQ area, camp kitchen, recreation/TV room, guest laundry and Wi-Fi.

550 Albany Highway, Albany
Free-Call: 1800 180 855
Tel: (08) 9841 7800
albanyholiday@acclaimparks.com.au
www.acclaimparks.com.au



MAP 1: I-17



ALBANY HOLIDAY UNITS

Spacious self contained units only 250m from Middleton Beach and 900m from the National ANZAC Centre. Fully equipped including Air Conditioning. Some units are wheelchair friendly. Choose from Studio, Twin or 2 bedroom units. Free WIFI.

19-21 Golf Links Road, Albany
Tel: (08) 9841 7817
info@albanyholidayunits.com.au
www.albanyholidayunits.com.au



MAP 3: H-29



CASTLEREAGH #4

Two storey self contained luxury beachfront apartment with stunning beach views. Featuring 2 queen size rooms, spa, balcony, secure parking, complimentary chocolates & local wine. Fabulous base for your Albany getaway.

Apartment 4, The Castlereagh
Cnr Flinders Parade & Barnett St
Tel: 0409 684 676
www.castlereagh4.com.au

MAP 3: I-30



CHEYNES BEACH CARAVAN PARK

2 minutes walk to beautiful Cheynes Beach and surrounded by Waychinicup National Park. Shaded, grassed sites with modern amenities. Fishing, boating, swimming, surfing, rare birds, flora & fauna. Excellent shore based whale watching.

12 Bald Island Rd, Cheynes
Tel: (08) 9846 1247
cheynes_cp@westnet.com.au
www.cheynesbeachcaravanpark.com.au



MAP 2: P-38



COSY CORNER BEACH COTTAGES

Stylish, spacious beautifully appointed cottages are individually designed and fully equipped with everything you need for your stay. 2 and 3 bedroom 2 bathroom AAA 4-Star rated cottages.

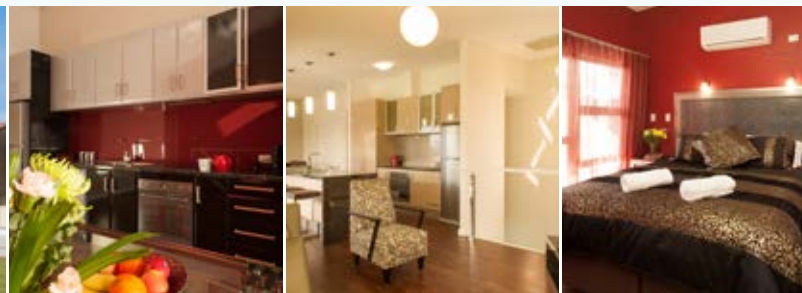
256 Cosy Corner Road
Torbay, Albany
Tel: 043989 5516
info@cosycornercottages.com.au
cosycornercottages.com.au



MAP 1: M-7



ALBANY WAVES



Situated on Marine Terrace, in Middleton Beach, Albany Waves Luxury Beach House Accommodation is the perfect location to enjoy a holiday. Featuring four architecturally designed, fully self contained 3 bedroom units. Albany Waves provides ideal holiday accommodation for families and couples and people with a mobility impairment requiring wheelchair access with one unit fitted with a wheelchair lift with phone. Privately managed to ensure personal service and excellence in presentation, Albany Waves are vibrant, stylish and beautifully appointed. Albany Waves have been designed to provide the ultimate in comfort and privacy; each uniquely decorated with quality furnishings and fitted with superior beds, luxury linen and fully equipped Smeg kitchens.

14 Marine Terrace, Middleton Beach
0447371585 or 0437371565
bookings@albanywaves.com.au
www.albanywaves.com.au



MAP 3: I-29



COUNTRY COMFORT AMITY MOTEL



Ideally located less than 2 km's from Albany CBD, Country Comfort Amity motel has 40 rooms and offers comfortable, clean, well-appointed accommodation with professional service and warm country hospitality. Our contemporary styled rooms are spacious, practical and provide all that is necessary for a restful night's sleep. All rooms have reverse cycle air-conditioning, coffee and tea making facilities and complimentary Wi-Fi.

234 Albany Hwy, Albany
Tel: (08) 9841 2200 Or 1800 644 990
reservations@amitymotel.com.au
www.amitymotel.com.au



MAP 1: K-18



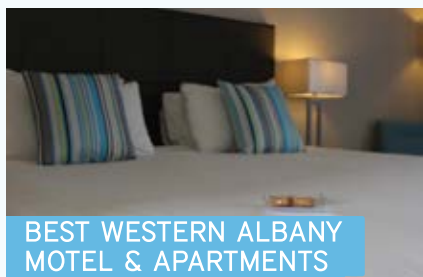
DOG ROCK MOTEL

In the heart of the city, free foxtel, free Wifi, free 24 hour in house movies, business facilities. Licensed, award winning restaurant.

303 Middleton Road, Albany
Tel: (08) 9845 7200
info@dogrockmotel.com.au
www.dogrockmotel.com.au



MAP 3: D-9



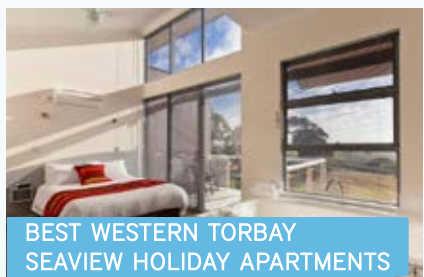
BEST WESTERN ALBANY MOTEL & APARTMENTS

CENTRAL LOCATION LOCATION!
Easy Stroll to shopping, cafes, Visitor Centre and Entertainment Centre. Contemporary guest rooms feature elegant furnishings and provide absolute comfort to relax with free WiFi and Cable TV.

Tel: (08) 9845 7500
info@albanybestwestern.com.au
www.albanybestwestern.com.au



MAP 3: K-9



BEST WESTERN TORBAY SEAVIEW HOLIDAY APARTMENTS

Spectacular ocean views from every apartment. Spacious apartments are fully equipped with everything you need for your stay. Enjoy a glass of wine on your private balcony. 2 and 3 bedroom, 2 bathroom AAA 4-star rated apartments.

252 Cosy Corner Road,
Torbay, Albany
Tel: (08) 9845 1904
torbayseaview@bestwestern.com.au
www.torbayseaview.com.au



MAP 1: M-7



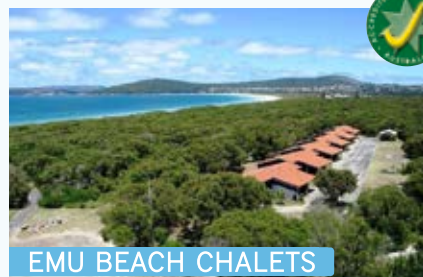
BIG4 MIDDLETON BEACH HOLIDAY PARK

500 metres of pristine beach frontage! Quality, affordable accommodation including luxury ocean view Beach Houses, Villas, Chalets, Cabins and sites. Pool, spa and free Wi-Fi. Close to restaurants and scenic walkways. 4.5 star AAA.

28 Flinders Parade, ALBANY
Tel: (08) 98413593
Freecall: 1800-644-674
holidayalbany.com.au



MAP 3: G-31



EMU BEACH CHALETs

Serenity by the Sea
Pet Friendly family chalets in a bushland setting right on Emu Beach. Fully self contained and equipped including linen and electric blankets. Air conditioned & Free WIFI. Undercover parking at your door.

9 Medcalf Parade, Albany
Tel: (08) 9844 8889
info@emubeachchalets.com.au
www.emubeachchalets.com.au



MAP 1: J-21



BIG4 EMU BEACH HOLIDAY PARK

Idyllic beach location surrounded by native peppermint trees just 10 minutes from town! Freshly renovated, affordable accommodation including Holiday Homes, Villas, Apartments, Chalets and sites. Facilities include playground, jumping pillow, mini-golf and free Wi-Fi. 4 star AAA.

8 Medcalf Parade, ALBANY
Ph: (08) 98441 147
Freecall: 1800 984 411
emubeach.com



MAP 1: J-21



EMU POINT MOTEL

Emu Point Motel is a 500m walk to beautiful Emu Beach & Emu Point. All our studios are air conditioned, & have fully equipped mini kitchens with a full size fridge/freezer. Free WIFI, parking at your door, daily service and lots more, located in a garden setting.

3 1/2 Star rated
1 Medcalf Pde, Albany
Tel: (08) 9844 1001
reservations@emupointmotel.com.au
www.emupointmotel.com.au

MAP 1: J-21



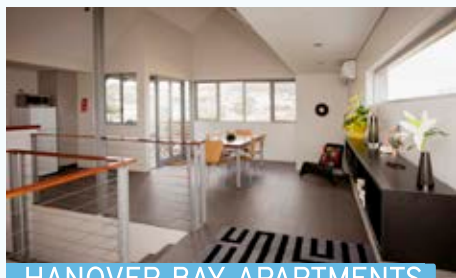
GLENELG ON KING B&B

Escape the busyness of life, to find peace & tranquility in a perfect semi-rural getaway. Close to town, up to 4 persons can enjoy 5 star luxury, nature walks, beautiful gardens, prolific birdlife.

52 Kelty View, Willyung
Tel: 0419 869 978
jan@glenelgonkingbnb.com.au
www.glenelgonkingbnb.com.au



MAP 1: G-18



HANOVER BAY APARTMENTS

Star Ratings Australia four-star rated self-catering holiday apartments close to the town centre and with superb harbour views. Each apartment features complimentary Wi-Fi, king size beds, high quality linen & towels, and luxurious furnishings.

The single story apartment is the perfect getaway for a couple, while two couples can feel pampered in the two-story apartment.

3 Festing Street, Albany
Tel: (08) 9841 9377 or (08) 9841 9346
stay@amazingalban.com.au
www.hanoverbay.com.au



MAP 3: M-4



MOTEL LE GRANDE

Located 5 minutes from Albany's CBD and airport, we offer friendly service and warm hospitality with comfortable, well-appointed one, two or three bedroom units or spa suites. Fully licensed a-la-carte restaurant and room service available.

479 Albany Highway, Albany
Tel: (08) 9841 3600
motel@legrande.com.au
www.legrande.com.au



MAP 1: I-17



HARBOURSIDE MOTEL

Conveniently located just 2 km from the centre of Albany.

Our small, quiet motel has Free WIFI and reverse cycle air conditioning. Motel rooms with a mini kitchen or fully self-contained 2 bedroom units.

77 Frenchmans Bay Road, Albany
Tel: (08) 9841 4688
info@harboursidemotel.com.au
www.harboursidemotel.com.au



MAP 1: L-17



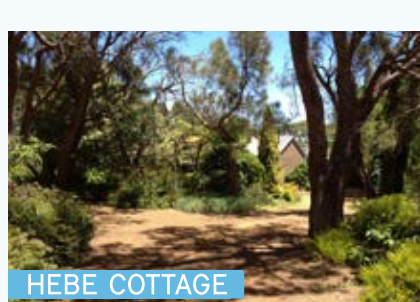
HAVANA VILLAS

Comfortable, affordable accommodation. Albany's favourite, family beachside chalets. Our 2 bedroom budget chalets are fully self contained with all you need including linen. Air Conditioned, BBQ's, Laundry, Bike Hire, tennis courts and FREE WIFI.

8-16 Firth Street, Emu Point
Tel: (08) 9844 1085
info@havanavillas.com.au
www.havanavillas.com.au



MAP 1: J-21



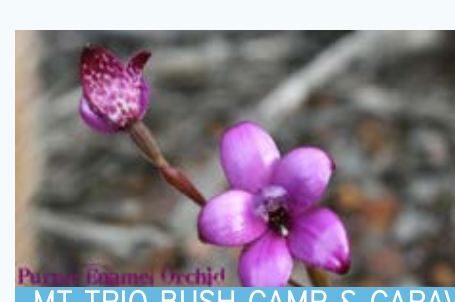
HEBE COTTAGE

JUST LIKE GRANDMA'S
Secluded, 3 brm olde worlde s/c accommodation situated on the banks of Oyster Harbour. Close to King & Kalgan Rivers, amazing beaches, national parks, walks & wildflowers. FREE WIFI

54 Alison Pde, LOWER KING
Tel 08 98447744 or
0448 835 774
amazingalban.com.au/book/hebe-cottage



MAP 1: H-22



MT TRIO BUSH CAMP & CARAVAN PARK

Situated in a peaceful natural bush enclave on a working farm bordering the Stirling Range National Park. The perfect base to explore the Stirling Ranges.

Guided Wildflower-Orchid Walks (September to October)
Choose your own POWERED site or camping spot.
Clean HOT showers; Terrific Campers Kitchen; Open fire (In season).

4850 Salt River Road, Amelup (Stirling Ranges)
9827 9270 or 0419 751 801
enquiries@mttrio.com.au
www.mttrio.com.au



MAP 2: A-30



OCEAN MIST VILLA

Experience quality and beachside location meters from beautiful Middleton Bay and minutes from town centre. AAA 4.5 star quality, home away from home accommodation, where the little things do matter!

Contact - Rob and Helen
Tel: +618 9844 3540
oceanmistvilla@westnet.com.au
www.oceanmistvilla.com.au

MAP 1: J-21



LILACS WATERFRONT VILLAS & COTTAGES

Offering a variety of self-contained cottages, perfect for an overnight stay or a family holiday. The Lilacs overlooks Princess Royal Harbour and is only 3.5kms from the centre of town. The perfect location to relax and enjoy all Albany has to offer.

151 Frenchman Bay Rd, Albany
Tel: (08) 9841 2390
www.lilacs.net.au
bookings@lilacs.net.au

MAP 1: L-17



MAITRAYA PRIVATE RETREAT

Maitraya Private Retreat
Rising spectacularly above the majestic Southern Ocean, Maitraya offers unparalleled beauty, complete seclusion and a serenity that will stay with you long after you depart. Accommodation for up to 16 guests in 8 double, sea facing bedrooms, indoor heated pool, spa, sauna, tennis court. More than a destination, a feeling...

Tel: (08) 9361 9044
bookings@maitraya.com
www.maitraya.com
#maitrayaretreat



MAP 1: J-27

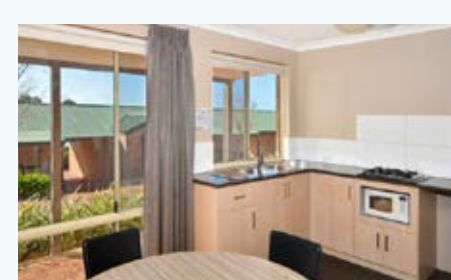


PARK AVENUE HOLIDAY UNITS

Featuring self contained 1, 2 or 3 bedroom units/apartments. Onsite parking, superb customer service. Walking distance to beautiful Middleton Beach, parks & cafes. Daily/weekly and off season rates apply.

13 Golf Links Road, Middleton Beach
Ph/Fax 08 9842 5242
nardia@parkavenueholidayunits.com.au
www.parkavenueholidayunits.com.au

MAP 3: I-29



QUALITY SUITES BANKSIA GARDENS ALBANY

Our 1, 2, and 3 bedroom serviced apartments offer more space, comfort and value than a motel room. Enjoy the open plan areas and retreat to separate bedrooms. Indulge in a spa suite or stay longer in our fully self-contained apartments. The fully licenced restaurant serves breakfast 7 days and dinner Mondays to Fridays. Book direct with us and enjoy a FREE continental breakfast* (*conditions apply - call now to find out more!)

212 Albany Highway, Albany WA 6330
Tel: (08) 9842 4111
admin@banksiagardens.com.au
www.banksiagardens.com.au



MAP 1: K-18



ROSE GARDENS BEACHSIDE HOLIDAY PARK

Located on beautiful Emu Point and overlooking King George Sound our beachfront park is ideal for your next visit to Albany. Plenty of shady caravan & camping sites, pet friendly caravan sites. Spacious, self contained accommodation includes 2 BR Spa Villas, Beachfront Villas and Chalets with ocean views. Facilities include playground, camp kitchen, games room, guest laundry, modern ablutions, mini mart and Wi-Fi.

45 Mermaid Avenue, Emu Point
Free-Call: 1800 88 99 99
Tel: (08) 9844 1868
rosegardens@acclaimparks.com.au
www.acclaimparks.com.au



MAP 1: J-21



SLEEPWELL MOTEL

Popular with couples & families alike, Sleepwell Motel offers standard & family rooms, plus apartments with kitchenettes. Indoor heated pool & spa, BBQs, tennis court, restaurant & bar, Wi-Fi, air-conditioning/heating, Foxtel & free in-house movies.

270 Albany Highway, Albany
Tel: (08) 9841 7399
albany@sleepwellmotel.com.au
www.sleepwellmotel.com.au



MAP 1: K-18



VILLA 15

Nestled between Middleton Beach and Emu Point, 100 metres from the beach and well away from traffic, Villa 15 is ideal for a safe, quiet and relaxing holiday.

Modern, spacious and fully self-contained, there's plenty of room for everyone with three bedrooms and two bathrooms making Villa 15 the ideal accommodation for couples right up to a family of six.

Dillon Close, Albany
Free-call: 1800 795 015
bookings@villa15.com.au
www.villa15.com.au



MAP 1: J-21



WOODY GRANGE CHALETs

Four very private, well equipped chalets nestled in a picturesque rural setting just minutes from Albany CBD. Fully self contained, r/c aircon, woodfire, views, kangaroos, birdlife & wildflowers in Spring. Rates from \$150pn.

208 Wilyung Road, Albany
Tel: (08) 9844 3458
woodygrange@bigpond.com
www.woodygrangechalets.com.au

MAP 1: G-18

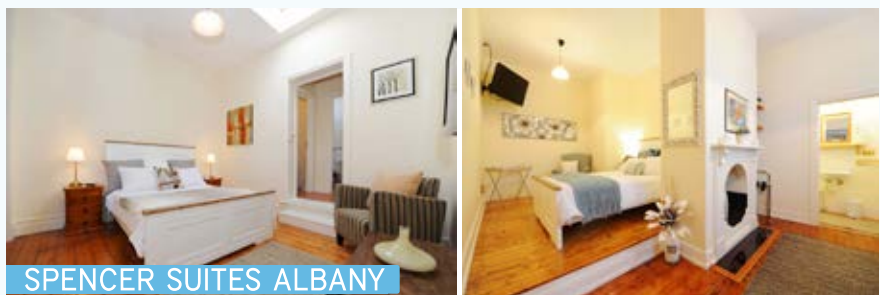
the Beach House at Bayside
BOUTIQUE HOTEL

Albany's Finest
Down by the Sea

We invite you to immerse yourself in a relaxing ambience, where gracious service and comfort are our commitment to you.
Tariffs from \$295 per night include gourmet breakfast, afternoon tea, evening port and chocolates.

See our website for packages and specials.
Tel: (08) 9844 8844 | 33 Barry Court, Albany 6330
luxury@thebeachhouseatbayside.com.au
www.thebeachhouseatbayside.com.au

MAP 1: J-21

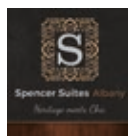


SPENCER SUITES ALBANY

Spencer Suites Albany is a blend of history (circa 1890) and chic accommodation.

Each spacious guest suite has a queen size bed, bathroom and sitting area. On-site parking, free Wifi, air-conditioning and a great location ensures our guests are comfortable and enjoy the best Albany has to offer.

69 Spencer St, Albany
Tel: 0402 419 039
reception@spencersuitesalbany.com.au
www.spencersuitesalbany.com.au



MAP 3: I-9



UHURU CHALETs

Our fully equipped self-contained chalets offer peace and seclusion in a bush setting. The larger chalet sleeps four; the 'Wagon' (pictured) is designed for a couple. Well behaved dogs welcome.

189 Railway Road, Torbay WA 6330
Tel: (08) 9845 1020
uhuru@inet.net.au
www.uhuru.net.au

MAP 2: T-21



ALBANY DRIVE IN MART

A place of wonder and whimsy, a dash of mystery and a splash of history. Charm to match. Tools, fine china, furniture old and new. Exchange on comics and books.

152 Albany Highway
Albany WA 6330
Tel: (08) 98412 472
ralph@albanyis.com.au

MAP 3: B-3



Nestled comfortably at the bottom of Mt Clarence you will find Albany's iconic Dog Rock, take a short walk past the amazing 'Salutation to ANZACS' Mural which is located along St Werburghs Lane and you will find yourself entering Dog Rock Shopping Centre.

This popular shopping centre is home to Woolworths, Priceline and Red Dot along with specialty stores including Colourworx Hair Studio, Camera House, Jaffa Java Café, Albany Lottery, Dog Rock Laundry and several specialty food stores. Take your time to stroll and enjoy this pleasant shopping experience.

Dog Rock Boulevard Shopping Centre, Lockyer Ave & Middleton Rd, Albany, 6330
Tel: (08) 9841 6395 Fax: (08) 9842 2566
Web: www.myboulevard.com.au
Trading Hours: Mon - Fri 8am - 6pm Thurs 8am - 9pm Sat 8am - 5pm



MAP 3: D-8

BREMER BAY



BREMER BAY VISITOR CENTRE

7 Mary Street, Bremer Bay WA 6338
(08) 9837 4171
tourism@bremerbaycrc.com

180kms east of Albany in Western Australia lies a small coastal town, Bremer Bay.

If you find yourself with a free day why not take a day trip to beautiful Bremer Bay. Bremer Bay is a coastal community located 180kms east of Amazing Albany on the South Coast between Albany and Hopetoun within the Shire of Jerramungup. The small town is surrounded by stunning pristine coastline and many natural

wonders. If you want to surf, fish or swim, there are eight beaches to choose from in town.


Bremer Bay is the gateway to the South West area of the Fitzgerald River National Park, covering over 329,000 hectares. The Fitzgerald River National Park is one the largest and most botanically significant National Parks in Australia. Explore the varied landscapes on foot, in your four wheel drive or by water in a canoe.

Bremer Bay has a unique underwater environment. The amazing Weedy and Leafy

Seadragon, unique to the southern temperate waters are often seen here as the adjoining sea grass beds are major breeding areas. Many visitors from around the world travel to Bremer just to catch a glimpse and/or photograph these unique sea creatures. Whales are a key attraction between May and October.

Rare and beautiful flora and fauna is in abundance. Wildflowers are evident all year round. The best times of the year are August, September and October. Many rare species are found only in and around Bremer Bay.

KILLER EXPERIENCE

Every year, between January and April, this remote spot off the WA coast becomes the epicentre for an unbelievable intensity of life. 

Bremer Canyon – a newly discovered marine wilderness hot spot.

Journey with Naturaliste Charters to the Bremer Canyon – a stunningly beautiful, remote habitat abundant with marine wildlife: whaler sharks, giant squid, sperm whales, masses of sea birds and the largest known group of killer whales in the Southern Hemisphere.

Tours run each day, from the Bremer Bay Boat Harbour, Fisheries Beach, located at the end of Swarbrick Road, Bremer Bay. You will be taken out on a 55ft purpose built whale watching vessel with three viewing areas – a spacious lounge area with seating for 30 inside, a huge foredeck and an upstairs fly-bridge with 360 degree views for an exhilarating experience.

Naturaliste Charters' friendly, professional and informative crew have marine science backgrounds to ensure visitors learn everything possible and have an unforgettable experience. Tour numbers are limited so everyone on board has the best opportunity to see the wildlife.

For more information on Bremer Bay or to book a tour to Bremer Canyon visit the Albany Visitor Centre, Old Railway Stn, 55 Proudlove Pde, Albany WA 6330 or call (08) 9841 9377.



BREMER BAY RESORT

The Bremer Bay Resort offers quality restaurant meals 7 days a week, 21 motel rooms (spa, family & standard) and views over the estuary. Come & enjoy your stay in beautiful Bremer Bay.

1 Frantom Way, Bremer Bay
Tel: 08 9837 4133
bookings@bremerbayresort.com.au
www.bremerbayresort.com.au



Whale Watching

WHALE WATCHING KILLER WHALE EXPEDITIONS ECO WILDERNESS TOURS

naturaliste charters

phone 9750 5500 | www.whales-australia.com.au

ACCREDITED TOURISM BUSINESS AUSTRALIA
Trust the ticks!



NATIONAL ANZAC CENTRE



VOTED AS AUSTRALIA'S NO. 1 MUSEUM



EXPERIENCE THE LEGEND

In late 1914 over 41,000 Australians and New Zealanders left Albany, bound for the Great War. This is their story.

The award winning National Anzac Centre is one of Australia's most important cultural pilgrimages.

Located within Albany's heritage listed Princess Royal Fortress, the National Anzac Centre honours the Anzacs of the First World War and overlooks the actual harbour from which over 41,000 men and woman departed Australia for the Great War.

Immerse yourself in the Anzac Legend and follow the personal stories of one of 32 characters through state of the art technology, multimedia and historic artefacts.

ADDRESS

Princess Royal Fortress, 70 Forts Road, Albany

OPEN

9am every day, except Christmas day

