

**WILLOUGHBY  
ARTISTS  
OPEN  
STUDIO  
WEEKEND**

**10AM - 4PM  
SAT 23 - SUN 24  
SEPTEMBER 2017**

**DISCOVER THE INNER  
CREATIVITY OF THE  
ARTIST WORKROOM**

**VISIT LOCAL ARTISTS  
INSIDE THEIR STUDIOS**



**1. HOME GROWN:  
THE URBAN LANDSCAPE**

**ART SPACE ON THE CONCOURSE | 409 VICTORIA  
AVE, CHATSWOOD | [www.willoughby.nsw.gov.au](http://www.willoughby.nsw.gov.au)**

A Council curated exhibition of 17 local artists exploring biodiversity in the local landscape.

Image credits: Susan Fulcher, *Time and Place 1*, photography, 2017



**2. SALLY APLIN**

**25 KOOPA AVE, CHATSWOOD**

Sally works across many media and exhibits her art work internationally. See a display of fired enamel panels, miniature bags, watercolour paintings, drawing, sculpture and vitreous enamelling processes. Image credits: Sally Aplin, *Sky Blue to Cerise*, enamel on copper and wood, 2015



**3. GLENDA HOY**

**10 MCLEAN AVE, CHATSWOOD**

Visit Glenda's studio exhibition of contemporary and exclusively designed functional homewares to sculptures. Glenda works with fine white porcelain, original ceramic jewellery, Raku ware, and much more. Something for everybody.

Image credits: Glenda Hoy, *Nesting Hearts*, porcelain, 2017



**4. ITZICK FISHER**

**8 CARR ST, CHATSWOOD | [www.itzickis.com](http://www.itzickis.com)**

Itzick's studio nestles among the beauty of Ferndale Reserve. During this two day open studio event, printmaking and sculpting demonstrations will take place throughout each day.

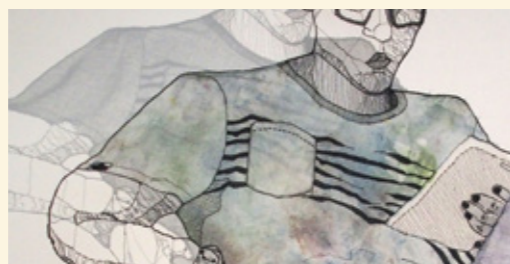


**5. SYDNEY PEMBERTON**

**ROSEMONT COTTAGE  
2 ORCHARD RD, CHATSWOOD**

With over 30 years experience, Syd's printmaking, painting, sculptures and drawing encompass her interest in gardening, food and food production. See her garden hens and honey bees that are often included in her paintings.

Image credits: Sydney Pemberton, *Foraging Bees 1*, acrylic on board, 2017



**6. TRAVAUX ON COURS**

**EWART GALLERY & WORKSHOP ARTS CENTRE  
33 LAUREL ST, WILLOUGHBY | [workshoparts.org.au](http://workshoparts.org.au)**

Solo exhibition by Jane Theau. Everyone is welcome to join Jane for a stitching session in the Gallery from 12 - 3pm on Sunday, September 24 and contribute to her public tablecloth. No experience necessary and mistakes are cherished!

Image credits: Jane Theau, *Travaux on Cours* (detail), thread, tarlatan, 2016

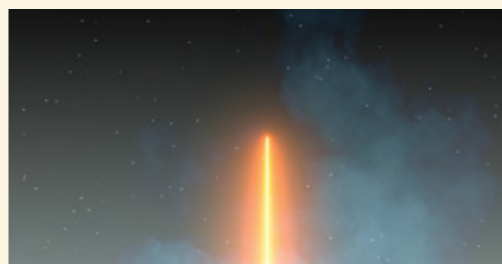


**7. GEOFF ADAMS**

**21 ARTARMON RD, WILLOUGHBY  
(ENTER FROM REAR IN ARMSTRONG ST)  
[www.geoffreyadams.com.au](http://www.geoffreyadams.com.au)**

A graduate of Sydney's National Art School, Geoff has been exhibiting paintings for about 30 years. Working in oils and watercolours using a variety of methods, Geoff's recent works focus on Mangrove landscapes and birds.

Image credits: Geoff Adams, *Gelato Sunday*, oil on canvas, 2016



**8. ALGORITHMIC PAREIDOLIA**

**INCINERATOR ART SPACE | 2 SMALL ST,  
WILLOUGHBY | [www.willoughby.nsw.gov.au](http://www.willoughby.nsw.gov.au)**

A Council curated solo exhibition by Wade Marynowsky. Algorithmic Pareidolia is a series of new experimental video, installation and robotic artworks that explore how our reality is increasingly simulated.

Image credits: Wade Marynowsky, *Algorithmic Pareidolia*, stills from high definition videos, 2017



**9. NORTHBRIDGE ART PRIZE 2017**

**NORTHBRIDGE SCHOOL OF VISUAL ARTS  
AND GALLERY 307 | 307 SAILORS BAY RD,  
NORTHBRIDGE | [www.nsva.com.au](http://www.nsva.com.au)**

View NSVA's Annual art prize at Gallery 307, with more than 150 artworks for sale. Northbridge School of Visual Arts offers tuition to all ages from beginners to advanced levels, in various disciplines and media.

Image credits: Joanna Gambotto, *Big Rock*, oil on board, 2016



**10. PETER FINLAY, LOUISE FRITH,  
TZEMING CHAN**

**NORTHBRIDGE ARTIST STUDIOS | 258 SAILORS  
BAY RD | (ENTER FROM NAMOI RD), NORTHBRIDGE**

Meet the artists in residence at Willoughby City Council's studios. Residents Peter Finlay, Louise Frith and Tzeming Chan all practice in the discipline of painting and there is plenty of new artwork on display.



**11. STEPH WATERHOUSE**

**232 EDINBURGH RD, CASTLECRAG  
[www.stephwaterhouse.com](http://www.stephwaterhouse.com)**

Stephanie's paintings evolve from the rich source of native and exotic botanical forms found in her garden, other gardens she has visited as well as Sydney's beautiful coastal bushland.

Image credits: Steph Waterhouse, *Adenium with Green*, acrylic on canvas, 2017



**12. ROBIN BLACKLOW**

**27 THE SCARP, CASTLECRAG**

Robin works with watercolour, design, calligraphy, bookbinding, weaving and small sculpture. For the past few years Robin has been creating one-off pieces of jewellery constructed from found materials.

Image credits: Robin Blacklow, *In Fine Feather*, feathers, copper wire, Japanese paper thread and beads, 2017



**13. ANTOINETTE MCSHARRY**

**29 THE SCARP, CASTLECRAG**

Antoinette's paintings, drawings and printmaking are often inspired by her travels and conceived in series form. As well as a long exhibiting history she is a highly accomplished art teacher and art guide.

Image credits: Antoinette McSharry, *Cuba Taxis*, watercolour and pencils, 2017

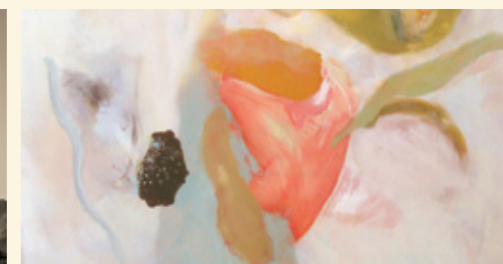


**14. LEN METCALF**

**12 THIRD AVE, WILLOUGHBY  
[www.lensschool.com](http://www.lensschool.com)**

In Len's words, "I speak for the trees and the trees have stories". View Len's recent photographic works as well as his studio. This is an opportunity to discuss his processes and photography study tours.

Image credits: Len Metcalf, *Richtersveld National Park*, photograph on cotton rag, 2017



**15. DEIRDRE HART**

**51 FOURTH AVE, WILLOUGHBY EAST**

Deirdre's artwork is a response to the landscape, predominantly in areas where water meets land. Working with acrylic and mixed media on paper and canvas, her abstract style captures the mood and essence of place.

Image credits: Deirdre Hart, *Drifting*, acrylic on canvas, 2016



**16. KARA PRYOR, ROSLYN LOWE AND  
SUSANNAH PATERSON**

**190 EASTERN VALLEY WAY, WILLOUGHBY**

Ceramics artists Kara Pryor, Roslyn Lowe and Susannah Paterson are selling works of functional ware plus sculptural characters. Come for a chat, share a cuppa while watching demonstrations of their various techniques.

Image credits: Kara Pryor, *Cheeky Monkey*, porcelain clay, 2017



**17. WILLOUGHBY PARK CENTRE**

**15 WARRANE RD (CORNER MCCLELLAND ST),  
WILLOUGHBY | [www.willoughby.nsw.gov.au](http://www.willoughby.nsw.gov.au)**

Visit the Mills Room Studio and new exhibition space featuring ceramic, sculpture and painting works from our talented diverse teachers and students. An opportunity to view the working studio, meet with the artists and tutors and purchase artworks.

Image credits: Amanda Harrison, *King of the Castle*, stoneware ceramic, 2017



**18. BARBARA GOLDIN**

**1 THE QUARTERDECK, MIDDLE COVE**

Barbara travels and camps extensively in outback Australia, sketching places she feels connected to. Her abstracted landscape paintings in oil or acrylic depict a feeling rather than specific scenes.

Image credits: Barbara Goldin, *Bells Gorge*, oil on canvas, 2017

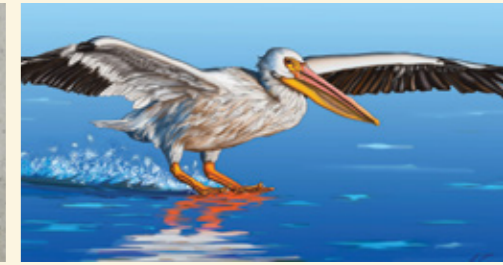


**19. LEE BLATTMANN**

**179 DEEPWATER RD (ENTER FROM MANNERIM  
PLACE), CASTLE COVE**

Watch Lee working on his metal sculptures and demonstrate some of the processes used in the creation of sculpture. Some completed sculptures will be on display and for sale.

Image credits: Lee Blattmann, *Crystal Consonance*, 316 Stainless Steel, ceramic and acrylic mount, 2016



**20. HAMISH GRAHAM**

**12 PADULLA PLACE, CASTLE COVE**

An exhibition of digital artworks by quadriplegic artist Hamish Graham. Hamish's computer generated imagery is produced by his use of a mouth piece. Hamish has been selected as a finalist for several exhibitions of national standing.

Image credits: Hamish Graham, *Pelican Landing*, digital print on paper, 2017

DOWNLOAD THE OPEN STUDIO MAP AT  
[WILLOUGHBY.NSW.GOV.AU/WVAB](http://WILLOUGHBY.NSW.GOV.AU/WVAB)

FOR FURTHER INFORMATION & ENQUIRIES  
KATHIE NAJAR@WILLOUGHBY.NSW.GOV.AU

0401 638 501



# WILLOUGHBY

ARTISTS

OPEN

STUDIO

WEEKEND

10AM - 4PM. SATURDAY 23 AND SUNDAY 24 SEPTEMBER 2017

Discover the inner creativity of the artist workroom. Learn about the diverse skills and talents of local artists inside their studios and view a variety of exhibitions.

Willoughby Artists Open Studio Weekend offers the chance to connect with artists who practice across the disciplines of painting, drawing, sculpture, ceramics, textiles, video art and more.

This is a free event.



- |   |                            |
|---|----------------------------|
| 1. ART SPACE ON THE CONCOURSE           | 11. STEPH WATERHOUSE       |
| 2. SALLY APLIN                          | 12. ROBIN BLACKLOW         |
| 3. GLENDA HOY                           | 13. ANTOINETTE MCSHARRY    |
| 4. ITZICK FISHER                        | 14. LEN METCALF            |
| 5. SYDNEY PEMBERTON                     | 15. DEIRDRE HART           |
| 6. EWART GALLERY & WORKSHOP ARTS CENTRE | 16. KARA PRYOR             |
| 7. GEOFF ADAMS                          | 17. WILLOUGHBY PARK CENTRE |
| 8. INCINERATOR ART SPACE                | 18. BARBARA GOLDIN         |
| 9. NORTHBRIDGE SCHOOL OF VISUAL ARTS    | 19. LEE BLATTMANN          |
| 10. NORTHBRIDGE ARTISTS' STUDIOS        | 20. HAMISH GRAHAM          |

Download the open studio map at [www.willoughby.nsw.gov.au/WVAB](http://www.willoughby.nsw.gov.au/WVAB)  
For further information and enquiries: [Kathie.najar@willoughby.nsw.gov.au](mailto:Kathie.najar@willoughby.nsw.gov.au) - 0401 638 501

This is part of Willoughby Visual Arts Biennial that runs from the 6 - 24 September 2017.  
For more information and to download the full event calendar visit: [www.willoughby.nsw.gov.au/WVAB](http://www.willoughby.nsw.gov.au/WVAB)



Sponsored by:

