

Maps

These maps have been extracted from the Arthur-Pieman Conservation Area 4WD Visitor Guide for website publication.

ARTHUR-PIEMAN RECREATIONAL VEHICLE TRACKS

To drive in the Arthur-Pieman designated vehicle area, all 4WD, trail bike and quad bike drivers need:

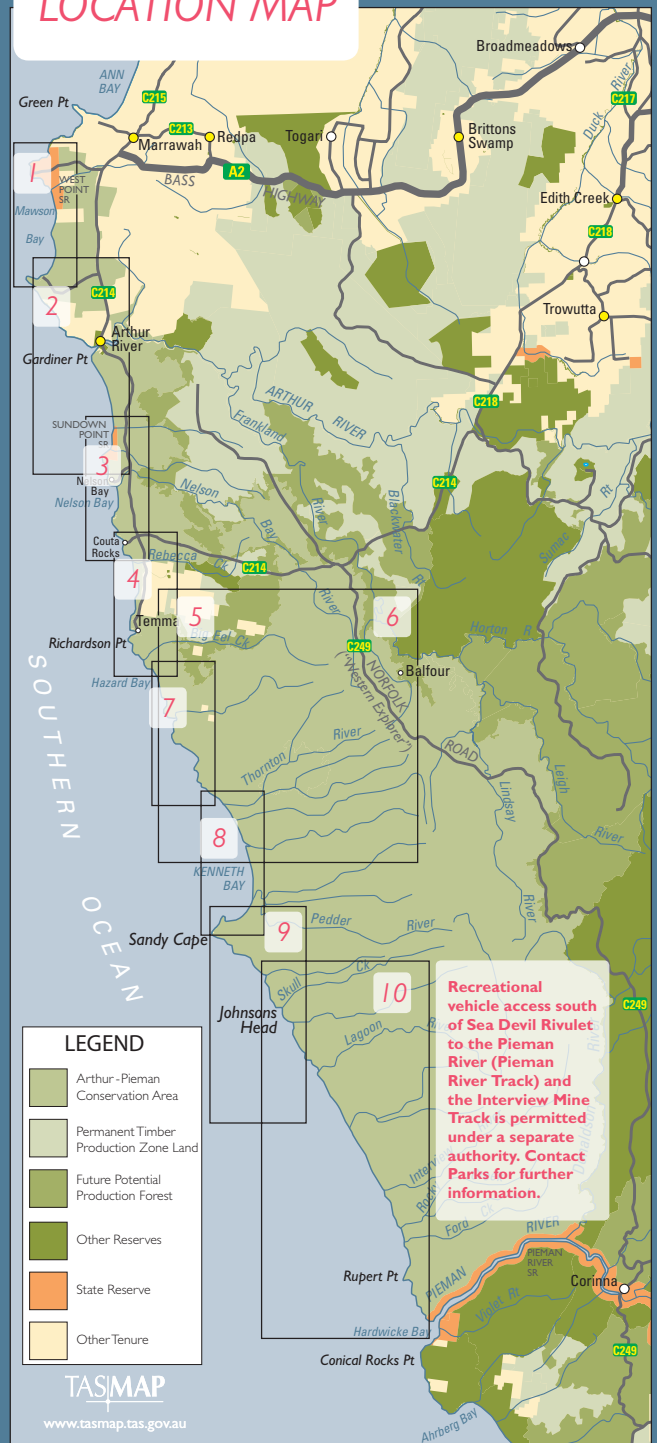
- a recreational driver pass (purchase on-line <http://shop.parks.tas.gov.au>; in-person from a Service Tasmania outlet; or visit the Parks office at Arthur River)
- the Arthur-Pieman Recreational Driving Guide and DVD (complimentary with your pass)
- a current driver's licence for the type of vehicle being driven
- a registered vehicle(s)

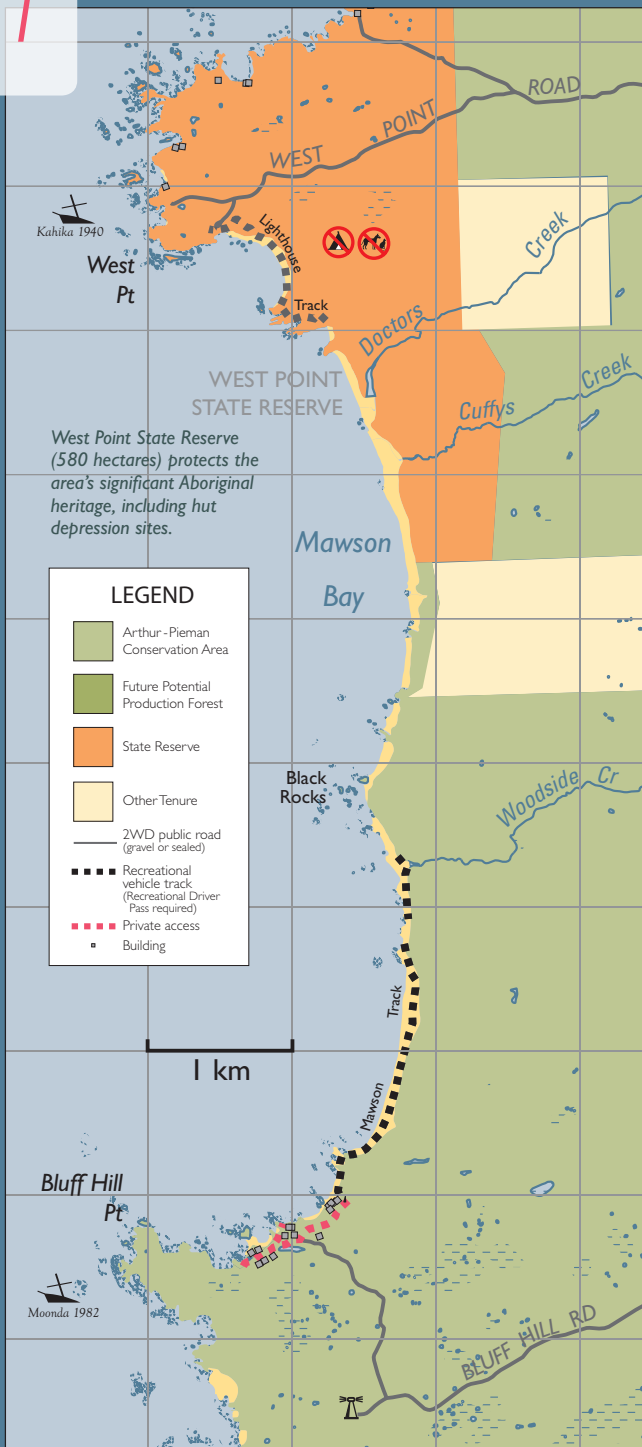


Tracks and roads shown on these maps are not necessarily open to the public at all times. Refer to signs on ground.



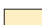
"Stay on Track! Don't drive off designated tracks. I did and got caught. It's not worth the fine, and it doesn't do the land or anyone any good."
Marrawah local

LOCATION MAP





LEGEND

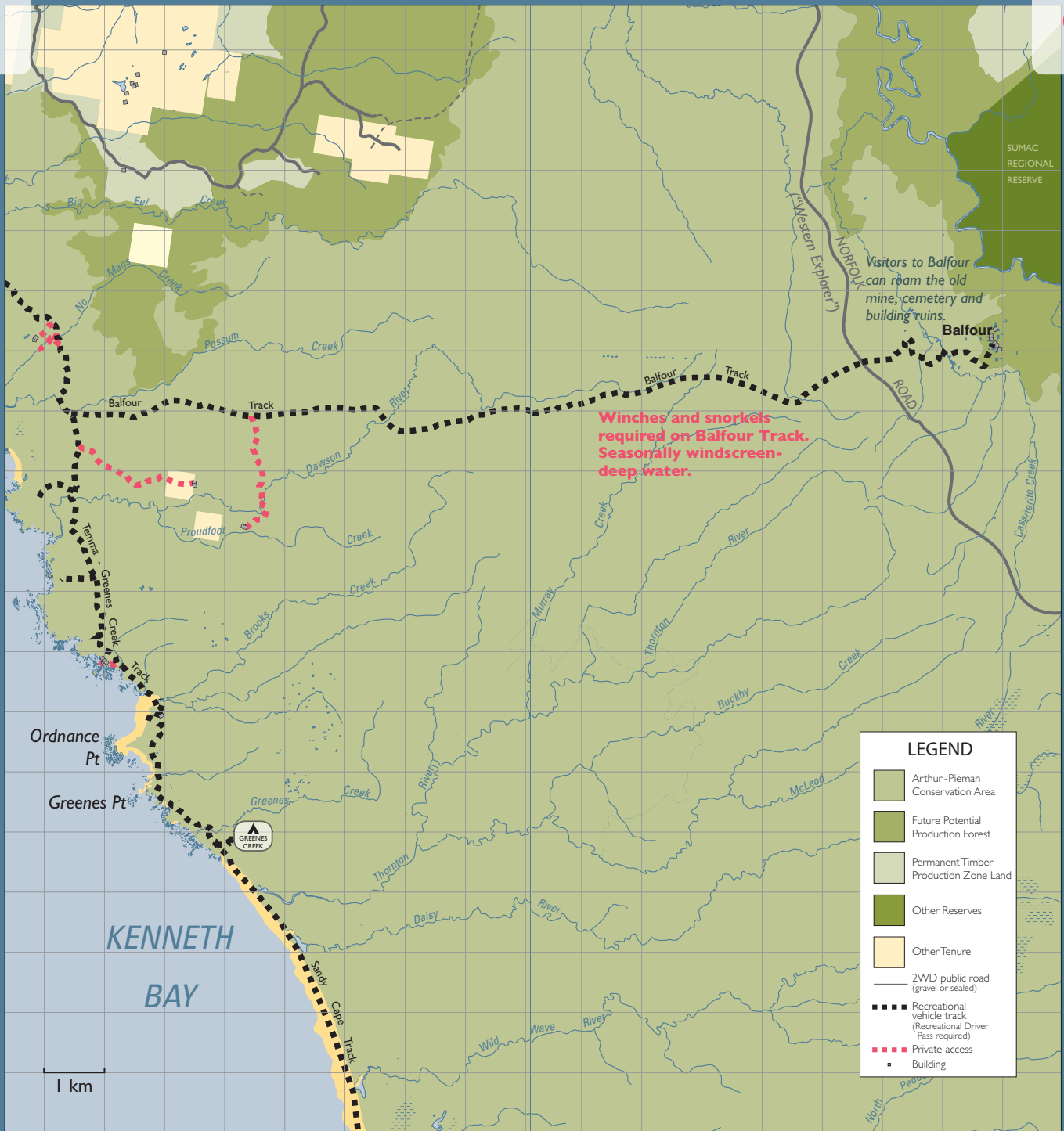
-  Arthur - Pieman Conservation Area
-  Future Potential Production Forest
-  Permanent Timber Production Zone Land
-  State Reserve
-  Other Tenure
-  2WD public road (gravel or sealed)
-  Recreational vehicle track (Recreational Driver Pass required)
-  Private access
-  Building

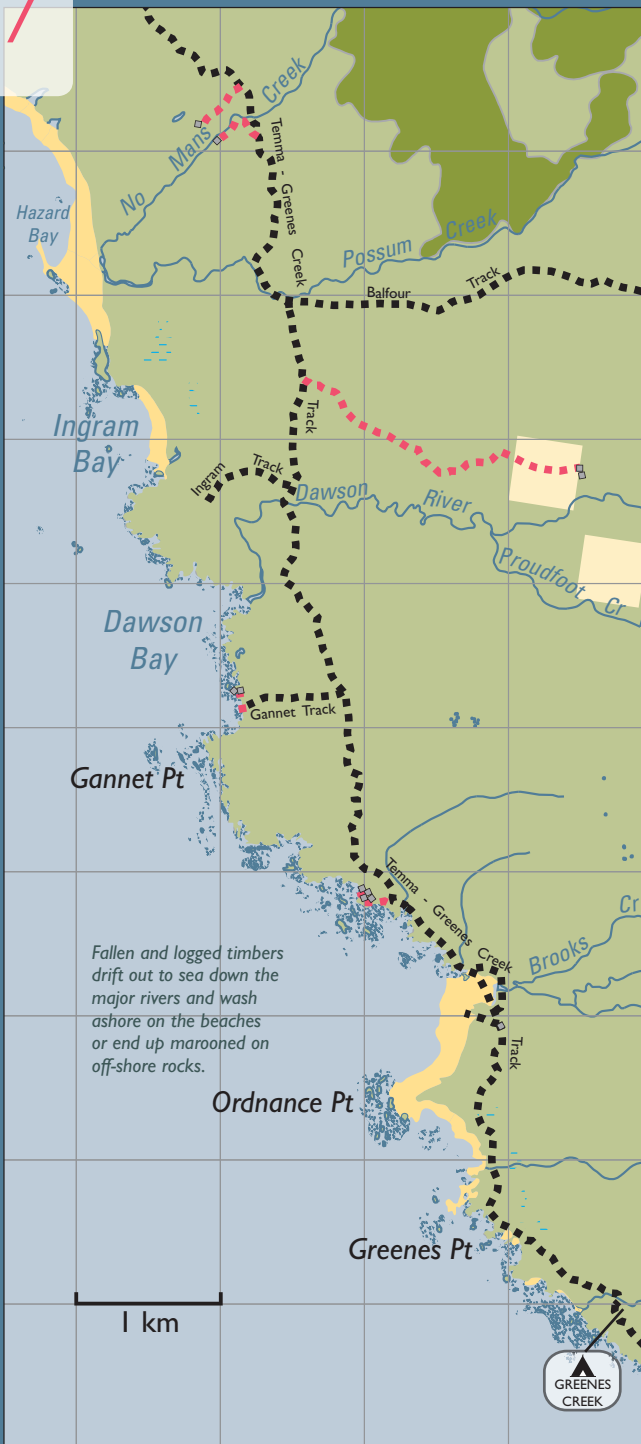


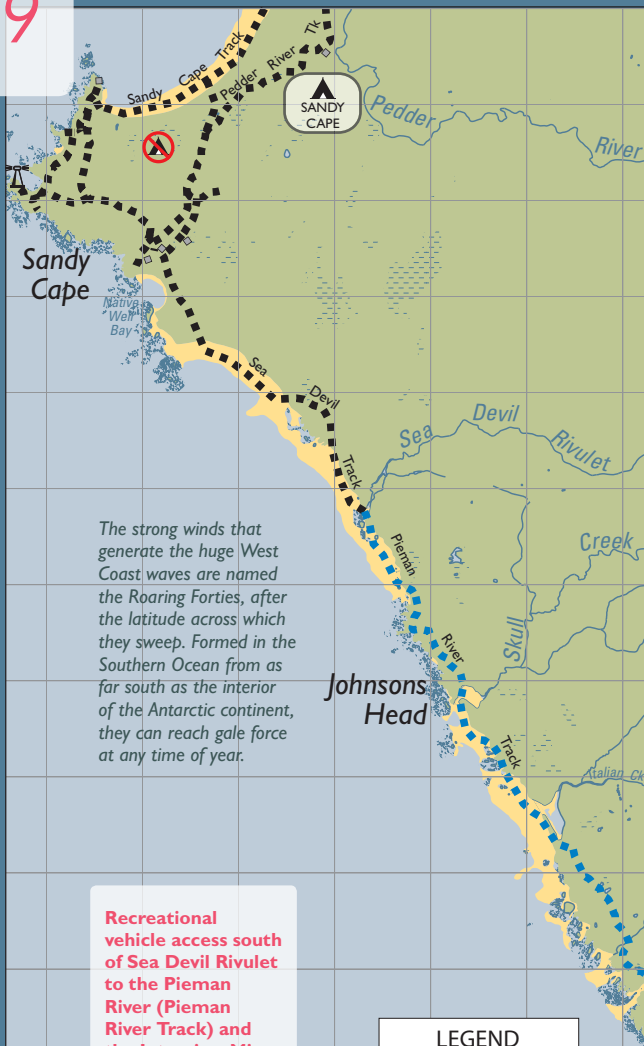
Storm cast bull kelp is collected under licence at several locations along the coast. It is dried and processed locally into granules for use as a soil conditioner and for animal feed.

It is also used to make liquid fertilizer. Alginates in the kelp are extracted and used in a variety of products, including icecream. Tasmanian Aboriginal women made water carriers from bull kelp.









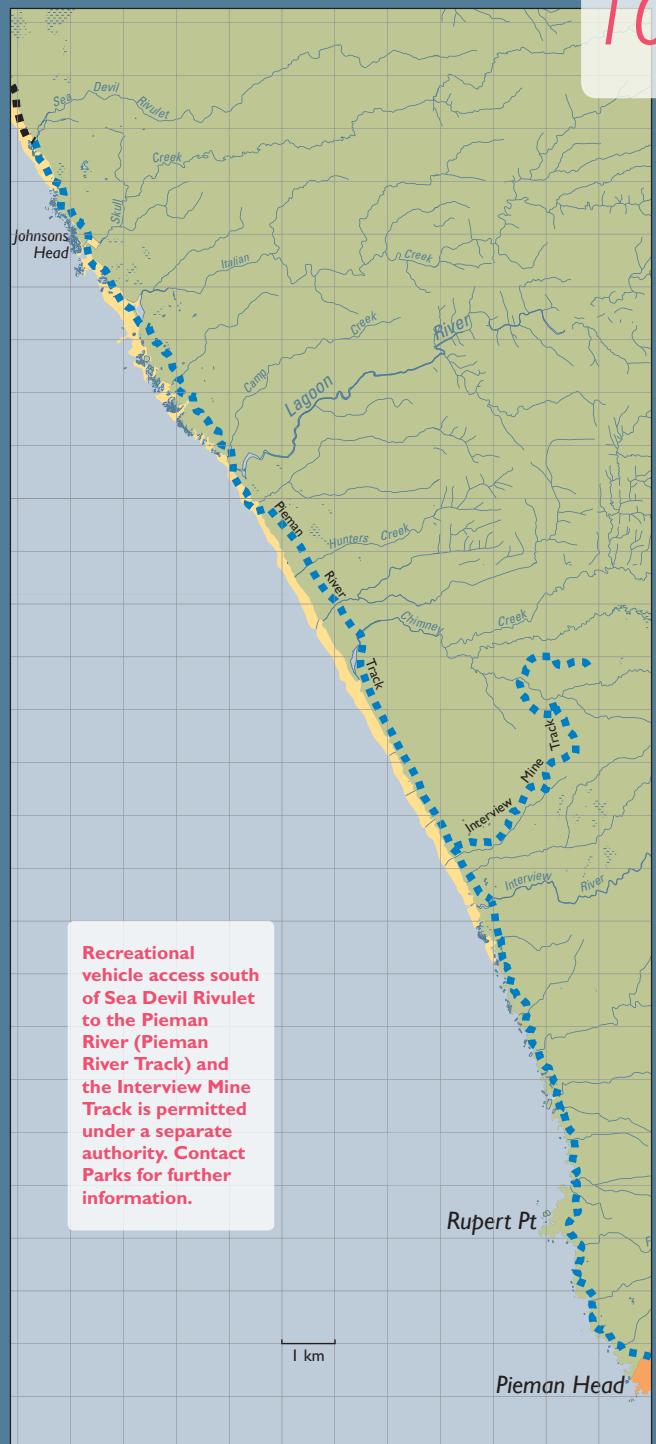
The strong winds that generate the huge West Coast waves are named the Roaring Forties, after the latitude across which they sweep. Formed in the Southern Ocean from as far south as the interior of the Antarctic continent, they can reach gale force at any time of year.

Recreational vehicle access south of Sea Devil Rivulet to the Pieman River (Pieman River Track) and the Interview Mine Track is permitted under a separate authority. Contact Parks for further information.

LEGEND

- Arthur-Pieman Conservation Area
- State Reserve
- Other Tenure
- 2WD public road (gravel or sealed)
- Recreational vehicle track (Recreational Driver Pass required)
- Recreational vehicle track (Special Pass required)
- Building

1 km



Recreational vehicle access south of Sea Devil Rivulet to the Pieman River (Pieman River Track) and the Interview Mine Track is permitted under a separate authority. Contact Parks for further information.

1 km



This is a multiple-use reserve. You will be sharing parts of the road with walkers, mountain bikes, trail bikes, quad bikes, horses, cattle and log trucks.



Sandy Cape Track

Only tracks marked in this booklet and sign-posted on ground as open form the designated vehicle area. Use of other tracks, or off-track driving, is prohibited.

TRAVEL TIMES

Travel times will vary widely according to local conditions. These times are in good conditions at a leisurely speed.

Arthur River-Sandy Cape – 5 hrs

Arthur River-Couta Rocks – 20 mins

Couta Rocks-Temma – 15 mins

Temma-Balfour via Balfour Track – 4 hrs

Balfour-Corinna (via Western Explorer) – 2 hrs

Temma-Sandy Cape – 4 hrs

Arthur River-Corinna (via Western Explorer) – 2.5 hrs

WESTERN EXPLORER ROAD

(Arthur River to Corinna)

The condition of this 112 km long road varies throughout the year. It's best in early summer after a fresh grading. Toward the end of summer, it can become corrugated and pot-holed. In good conditions, allow about 2 hours travel time (without stops) from Arthur River to Corinna, and expect to travel at a speed of around 70 km/hr. To cross the Pieman River at Corinna you need to engage the services of The Fatman – Tasmania's only cable-driven vehicle barge. The service operates on demand from 9am to 7pm (1st October-31st March) and from 9am to 5pm (1st April-30th September). A small charge applies. For details on load and length capacity, phone (03) 6446 1170.

