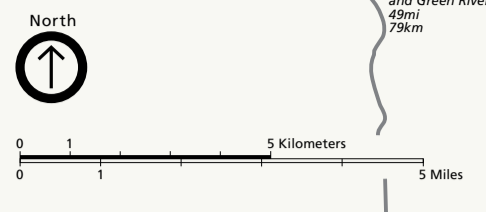
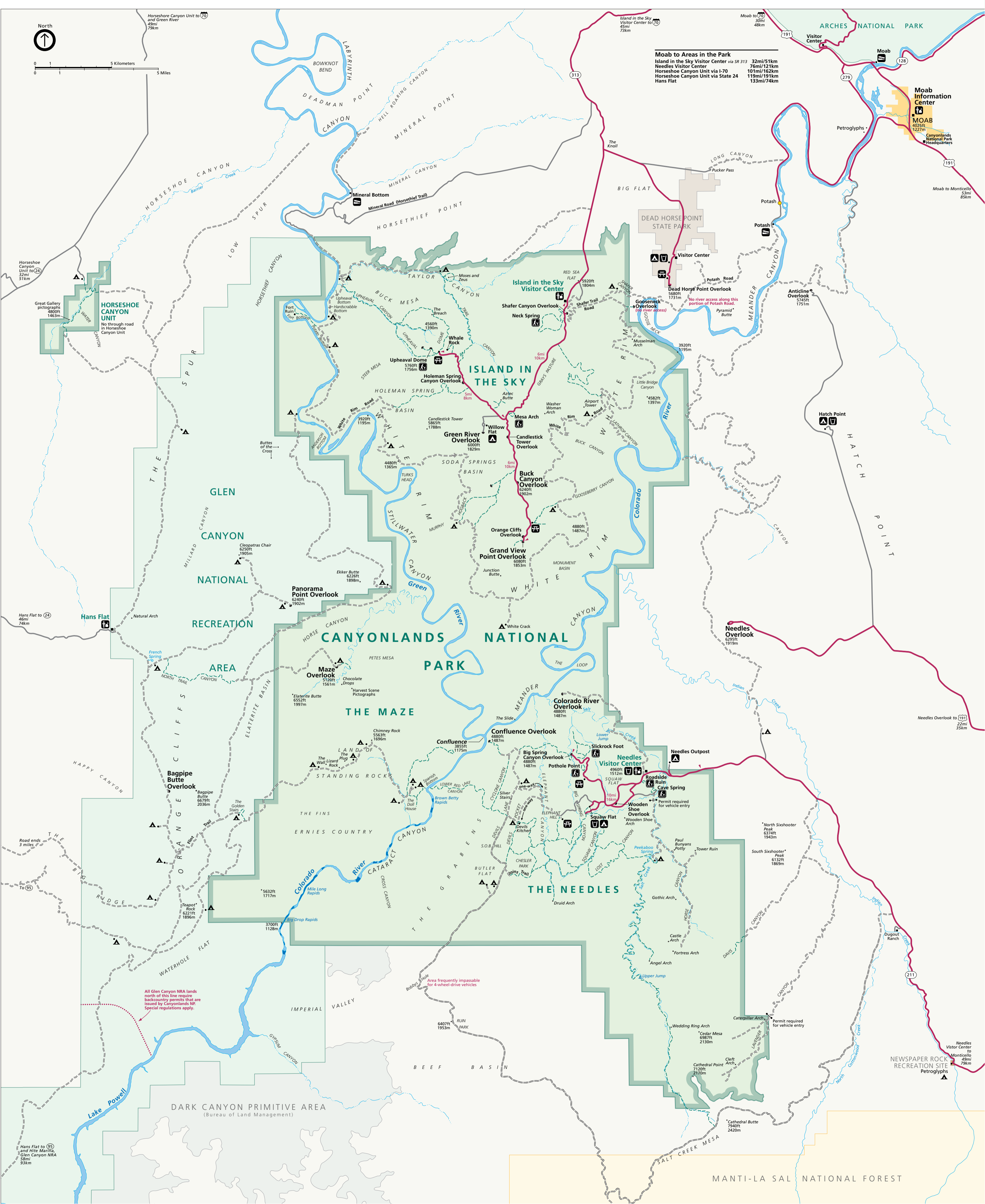


- Unpaved 2-wheel-drive road
- Unpaved 4-wheel-drive road
- Overlook/Paved road
- Trail
- Rapids
- Boat launch
- Ranger station
- Picnic area
- Self-guiding trail
- Campground
- Primitive campsite
- Drinking water
- Locked gate



**Moab to Areas in the Park**

Island in the Sky Visitor Center via SR 313	32mi/51km
Needles Visitor Center	76mi/121km
Horseshoe Canyon Unit via I-70	101mi/162km
Horseshoe Canyon Unit via State 24	115mi/191km
Hans Flat	133mi/214km



All Glen Canyon NRA lands north of this line require backcountry permits that are issued by Canyonlands NP. Special regulations apply.

Area frequently impassable for 4-wheel-drive vehicles

Needles Visitor Center to Monticello 49mi/79km

Hans Flat to 23 and Hite Marina, Glen Canyon NRA 52mi/83km

Needles Visitor Center to Monticello 49mi/79km