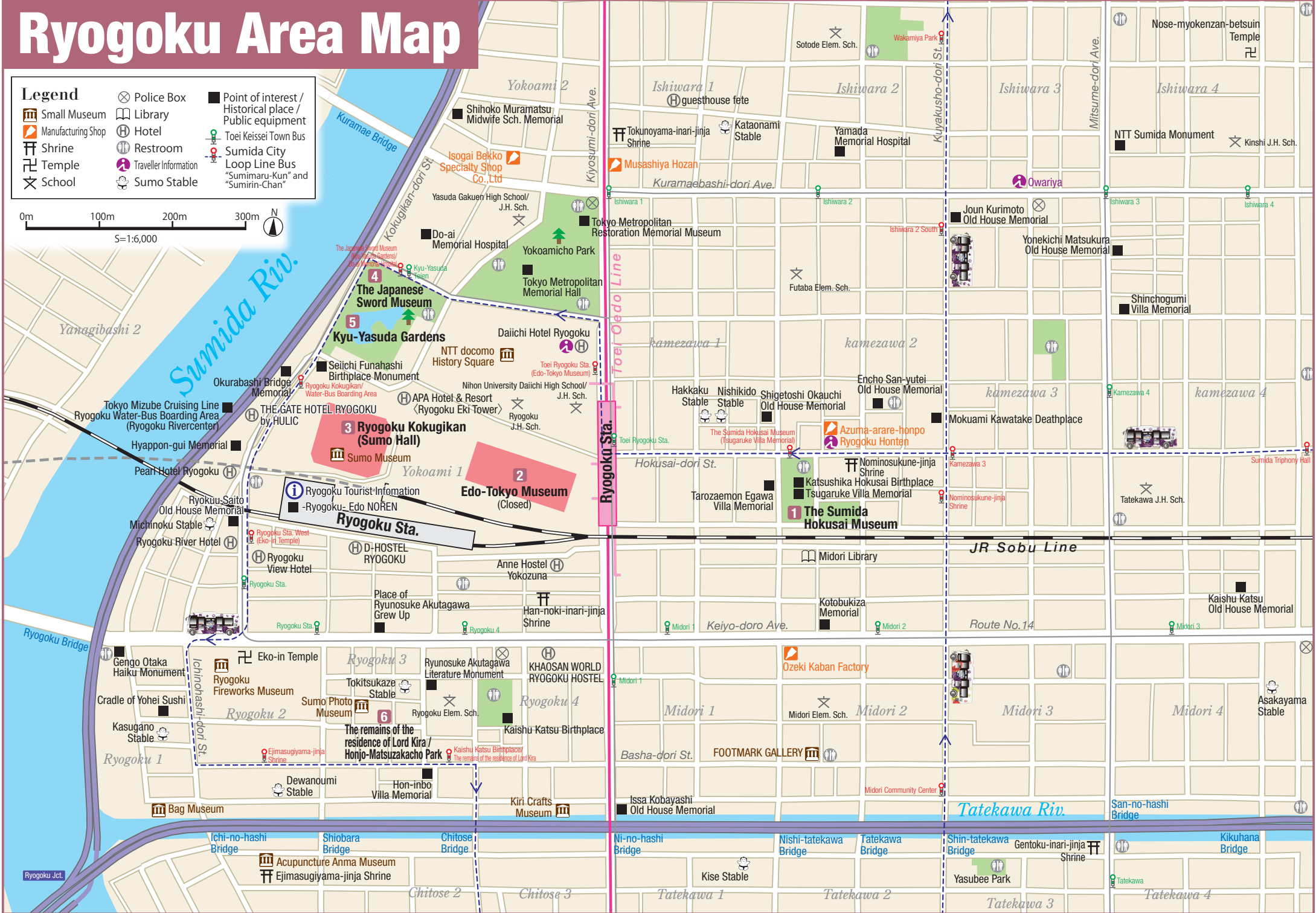


Ryogoku Area Map

- Legend**
- Small Museum
 - Library
 - Manufacturing Shop
 - Shrine
 - School
 - Police Box
 - Hotel
 - Restroom
 - Traveller Information
 - Sumo Stable
 - Point of interest / Historical place / Public equipment
 - Toei Keisei Town Bus
 - Sumida City Loop Line Bus "Sumimaru-Kun" and "Sumirin-Chan"



Ryogoku

Ryogoku is a Sumo Town and possesses a plethora of museums. Reach out and touch authentic Japanese culture.

<https://visit-sumida.jp>



1 The Sumida Hokusai Museum

This museum specializes in the exhibition of works by the world-famous Japanese artist Katsushika Hokusai (1760-1849). It is said that his work even influenced such western giants as Van Gogh and Monet.



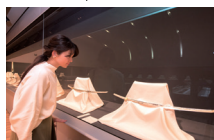
3 Ryogoku Kokugikan (Sumo Hall)

The Grand Tournaments are held six times a year. Only half of those are held at Kokugikan in Ryogoku; in January, May, and September; each being two weeks long. The Sumo Museum on their premises is open year-round.



4 The Japanese Sword Museum

Japanese swords are cultural assets where weapons become works of art. Behold 1000-year old Japanese swords and fittings, carefully preserved so that they still shine as they did on the day they were crafted.



5 Kyu-Yasuda Gardens

This garden possesses many typical charm points of Japanese gardens, including a pond, bridges, as well as a variety of trees which reflect the four seasons. As you meander along the pond-side path you can catch a glimpse of TOKYO SKYTREE®.



6 The remains of the residence of Lord Kira/ Honjo-Matsuzakacho Park

This 1/86th remnant of Lord Kira's mansion is preserved as a park where the vendetta of the 47 Ronin took place in 1702. Lord Kira provoked Lord Asano - the master of the 47 Samurai- resulting in the death of those 47. This revenge story is known as "Chushingura" and many movies and Kabuki plays are based on this historic event.



2 Edo-Tokyo Museum (Closed until 2025)

This museum communicates 400 years of Edo and Tokyo history. Enjoy crossing a life-size replica of the Edo-era Nihonbashi Bridge which people crossed so festively in bygone times. Scale models of scenes from Edo-era daily life may be enjoyed by visitors of all ages.



TRIVIA OF RYOGOKU

a. The Pleasant Scent of Sumo Wrestlers

Since Ryogoku is home to many Sumo stables you may spot Sumo wrestlers walking about. You may also catch a whiff of the pleasant odor emanating from the traditional oil that is added to their hair when it is tied back.



b. Chanko Nabe (hotpot)

The daily fare of the Sumo wrestlers largely consist of a hotpot called Chanko Nabe which includes a lot of meat, seafood, and vegetables. Originally "Chanko" meant all cuisine prepared by Sumo wrestlers. Ryogoku is home to many Chanko restaurants, so please seize the chance to sample this fare.



c. Kyu-Yasuda Gardens is a Photo Opp

An arched bridge stretches over an arm of a pond. Pond-side, you can simultaneously view TOKYO SKYTREE® and this garden. Enjoy taking Japanesque photos.



d. Purveyor of Clothing to Sumo Wrestlers

Founded in 1907, Lion-do is a large-size specialty store where many Sumo wrestlers like to shop. Stocking up to size 6 L, this shop's assistants will help you find your fit.



Let's Speak Japanese! | 日本語を話してみよう!

Oishii Sumida TOKYO



Greetings

Good Morning.
おはようございます。
Ohayoo gozaimasu.

Hello.
こんにちは。
Konnichiwa.

Thank you very much.
ありがとうございます。
Arigatoo gozaimasu.

